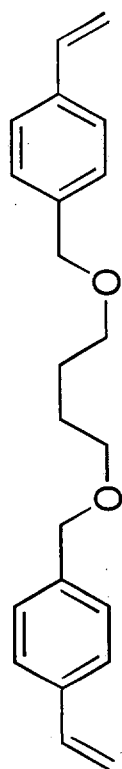


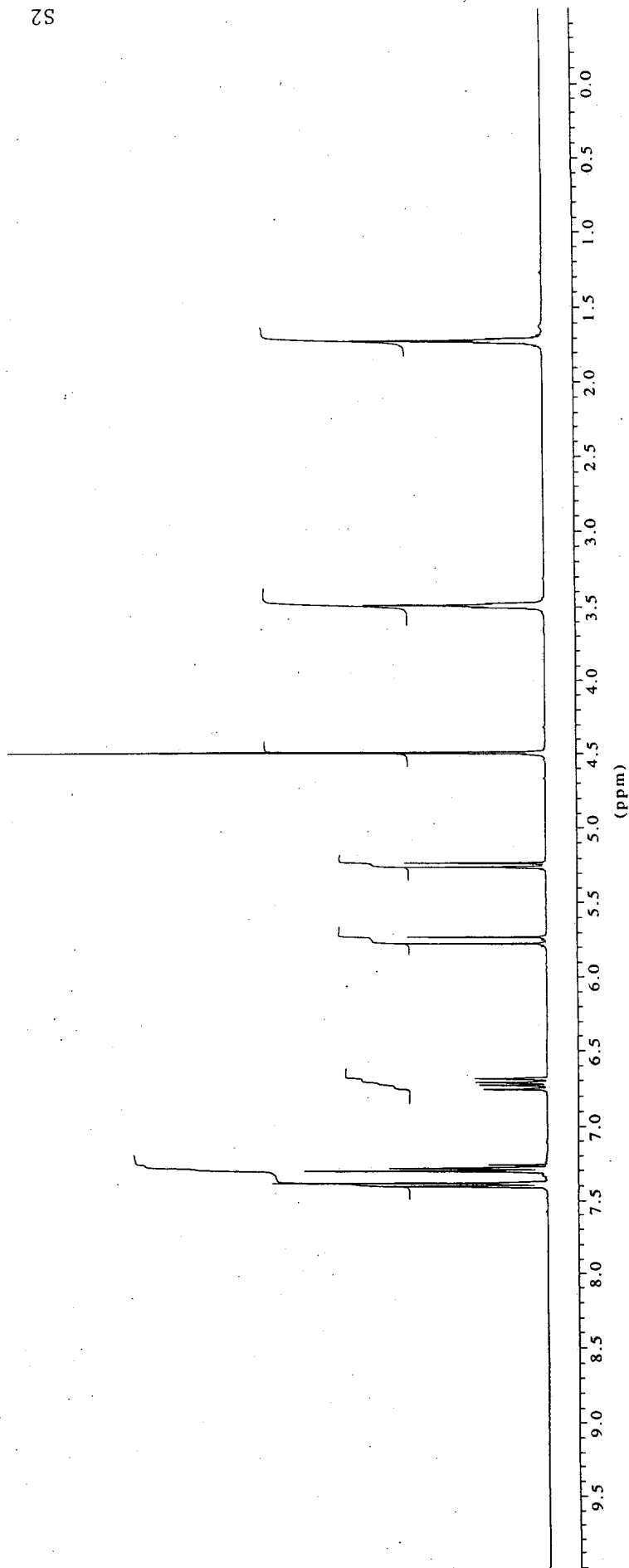
**Table S1.** Volumes of swollen resins

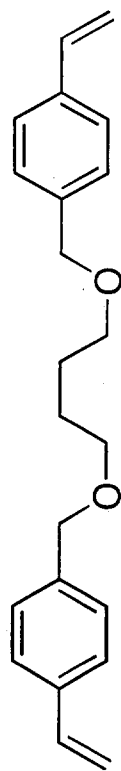
Resin - Cross-linking (%)	Volume of Swollen Resin (mL/g) <sup>a</sup>				
	Dioxane	THF	DMF	Benzene	CH <sub>2</sub> Cl <sub>2</sub>
Merrifield-1 <sup>b</sup>	6.0	6.4	4.8	6.6	6.0
Merrifield-2 <sup>b</sup>	5.4	5.4	4.2	6.6	5.8
Tentagel HMP-1 <sup>b</sup>	4.8	4.4	4.4	4.0	5.8
5a-1	11.8	13.4	8.8	12.6	11.8
5a-2	7.0	7.0	5.0	7.6	6.6
5a-5	5.2	5.6	3.8	5.8	4.8
5a-10	4.2	4.2	3.2	4.8	4.4
5b-1	10.4	10.4	8.0	12.2	10.6
5b-2	7.4	8.2	5.6	9.6	7.8
5b-5	5.6	5.8	3.6	7.2	5.8
5b-10	4.0	4.0	3.0	5.0	4.6
5c-1	12.6	12.6	8.2	13.8	12.4
5c-2	8.4	8.4	5.4	8.0	7.8
5c-5	5.4	5.8	3.6	5.8	5.6
5c-10	5.6	5.4	3.2	5.8	5.6
6a-1	14.8	14.0	10.4	14.6	15.0
6a-2	7.8	7.4	6.0	8.2	7.4

(a) Volumes were measured in syringes equipped with a sintered frit after equilibrating for 1 h. Resins **5a-c** and **6a** did exhibit modest swelling in ethyl ether and 1:1 THF:water. Water, acetonitrile, and ethanol were also examined, but no significant swelling was observed. All resins had dry volumes of approximately 1.5 mL/g. (b) Resin was purchased from NovaBiochem and used as received.

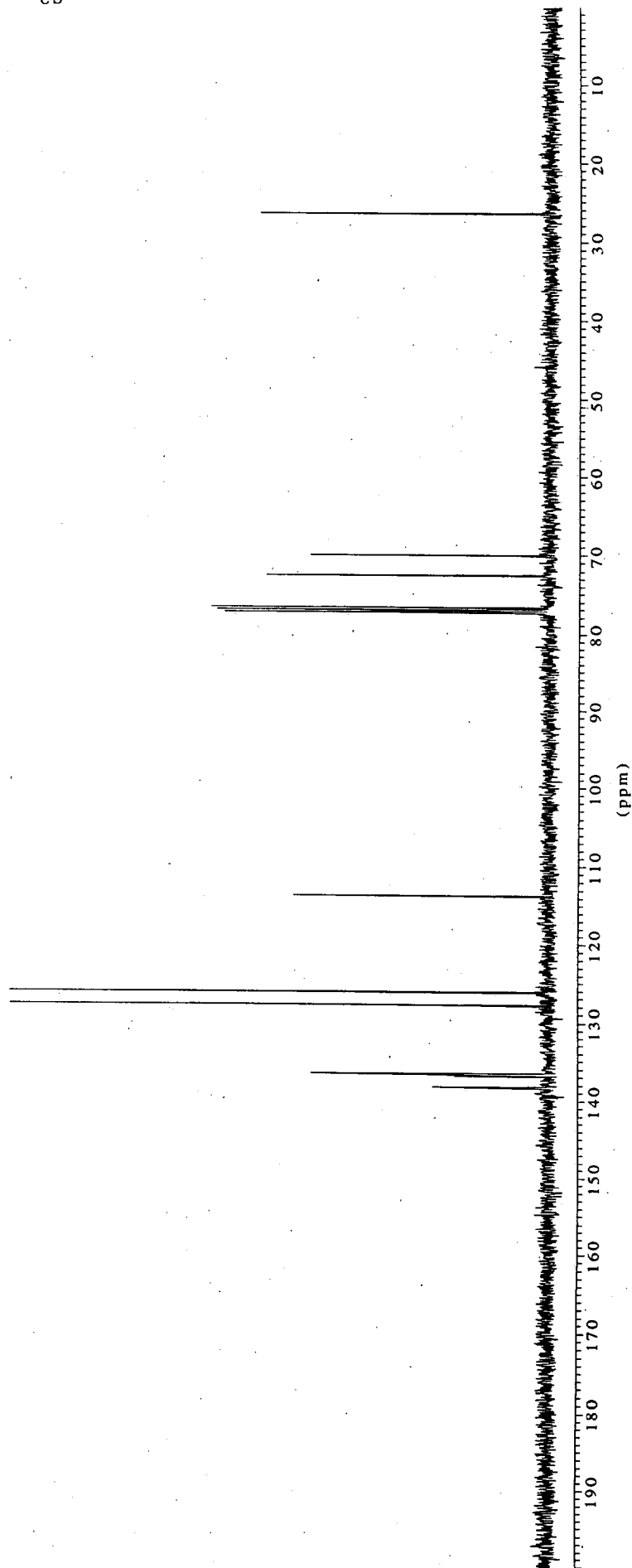


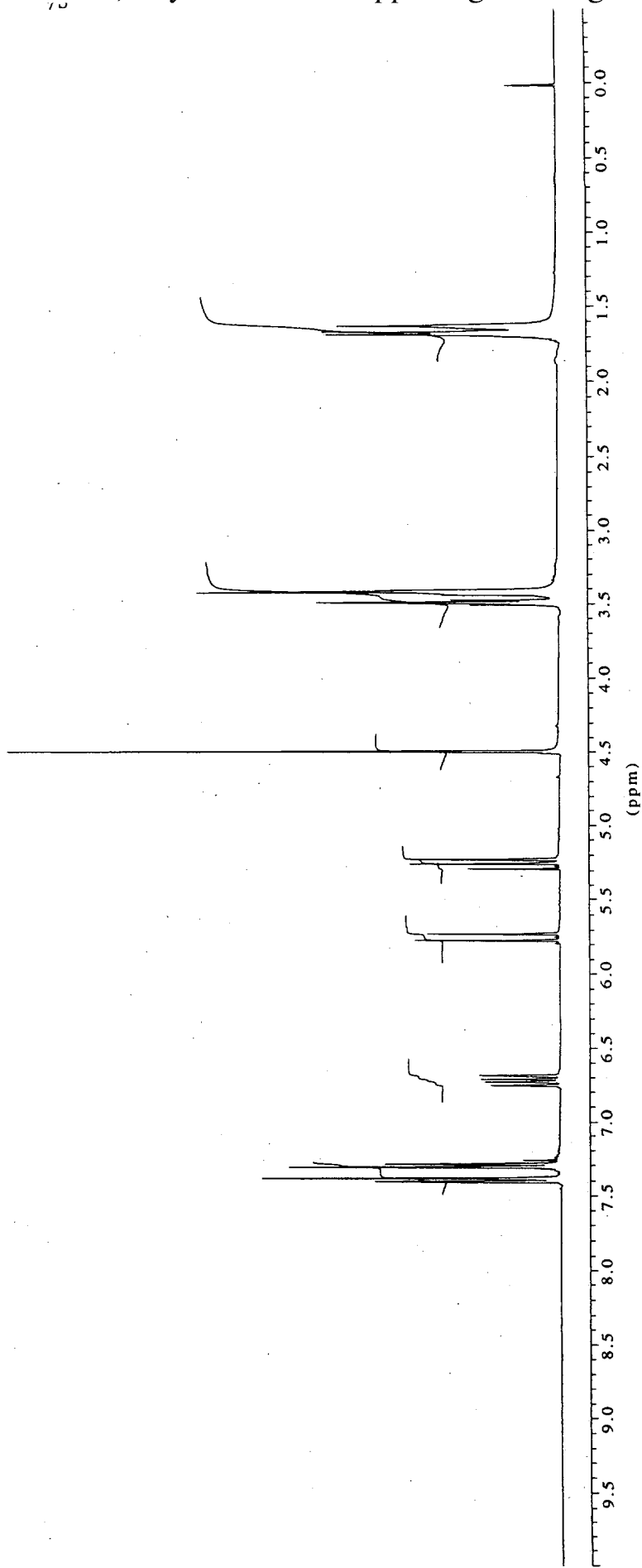
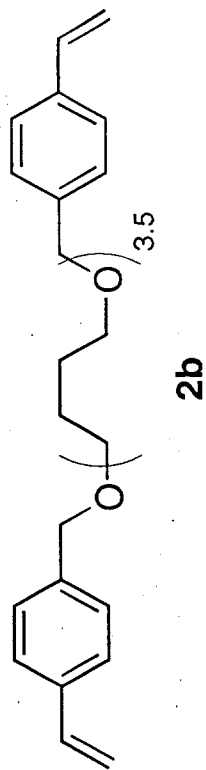
2a

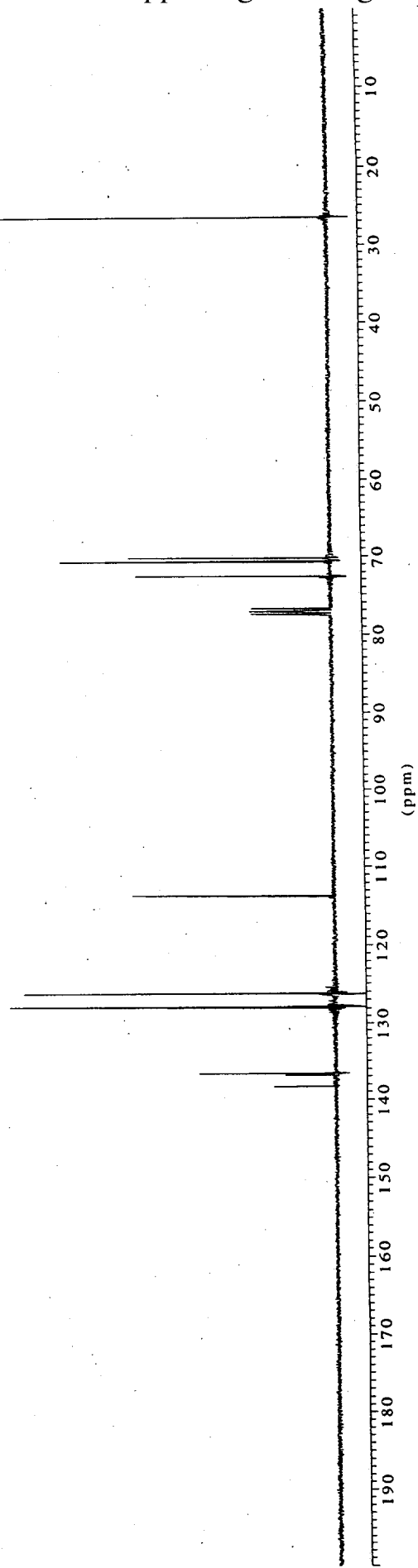
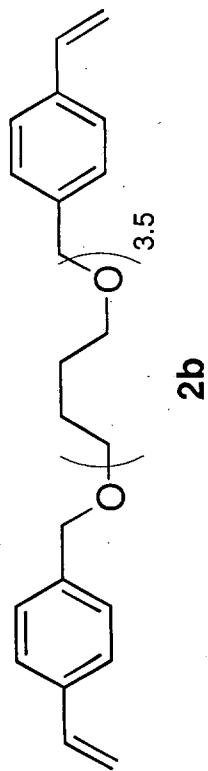


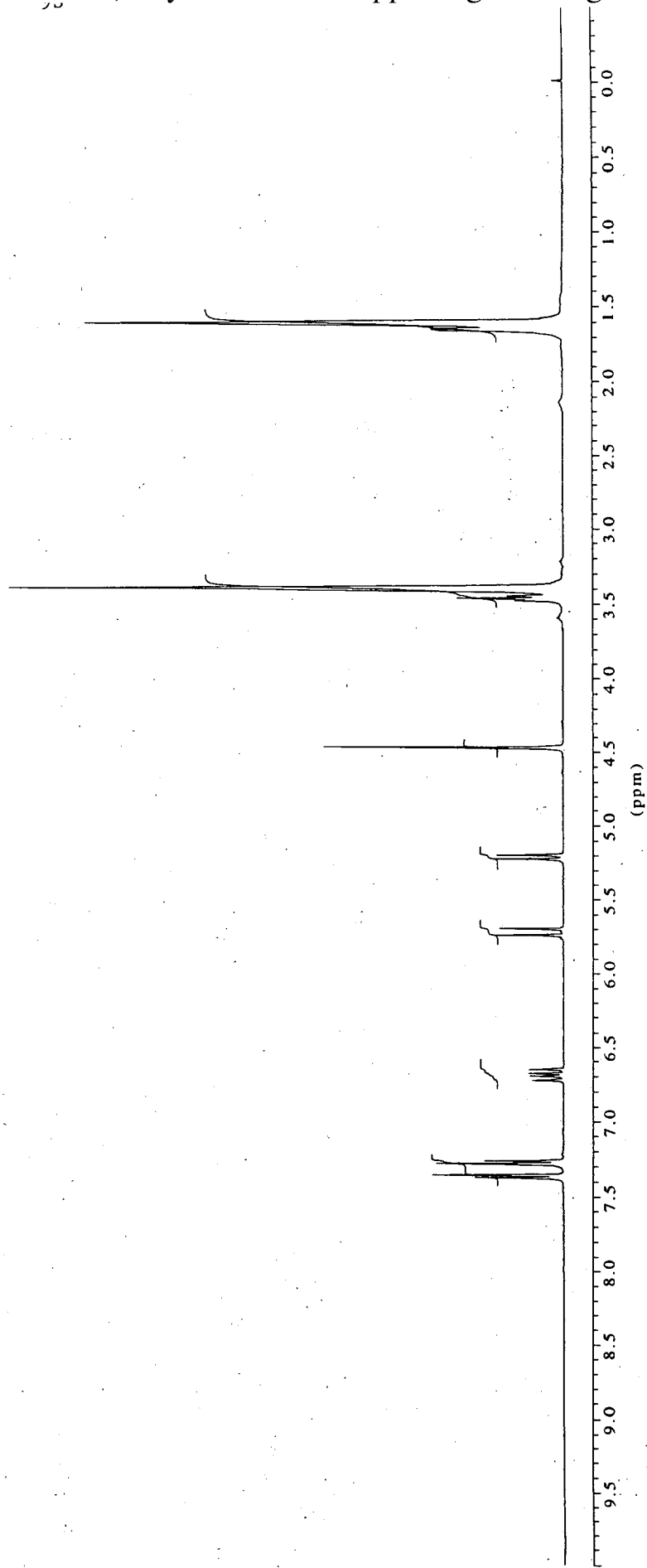
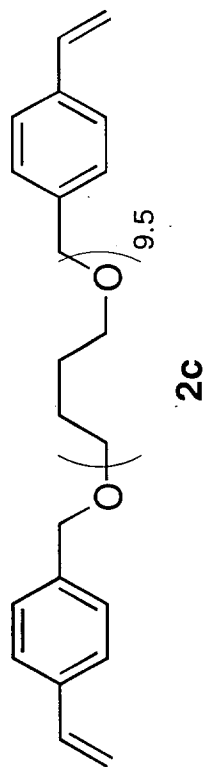


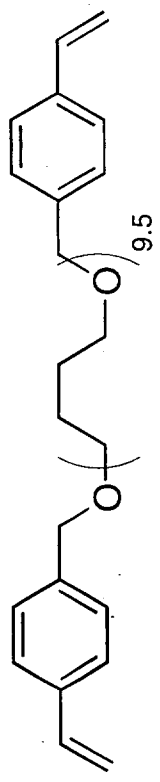
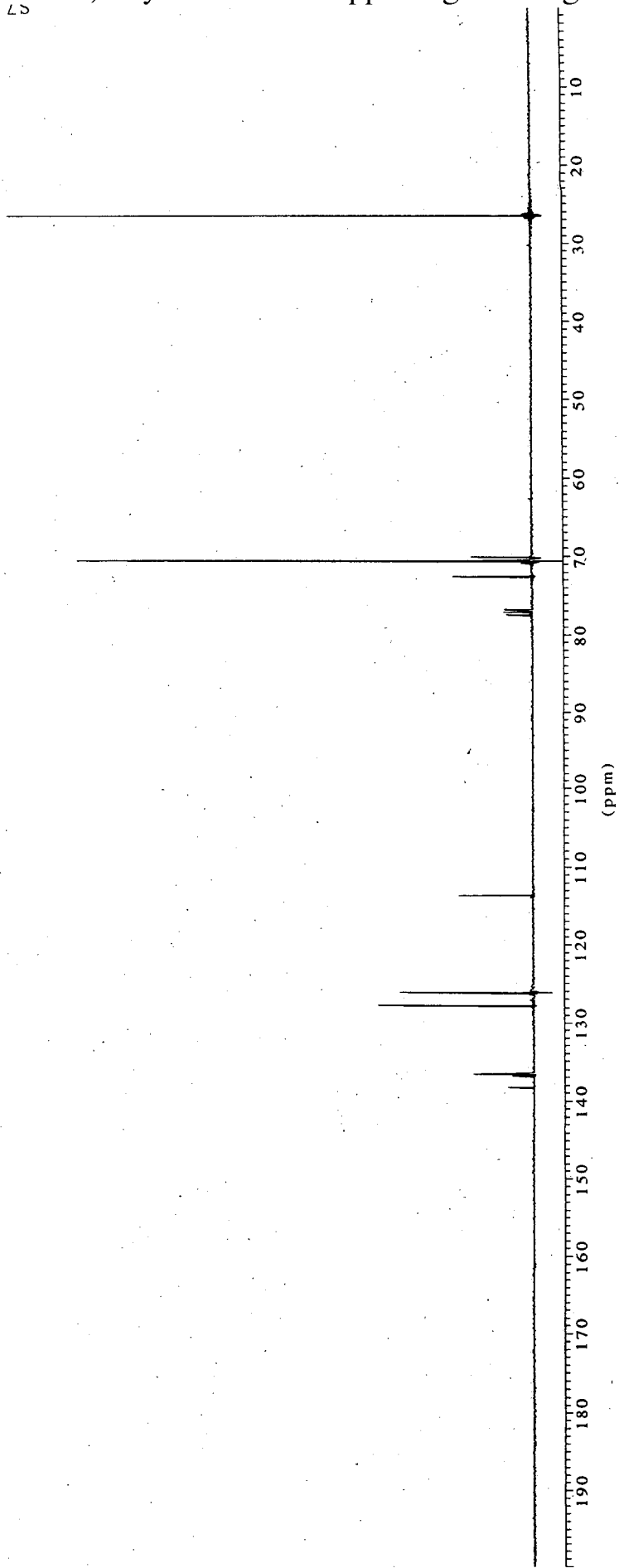
2a



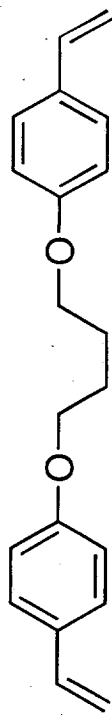




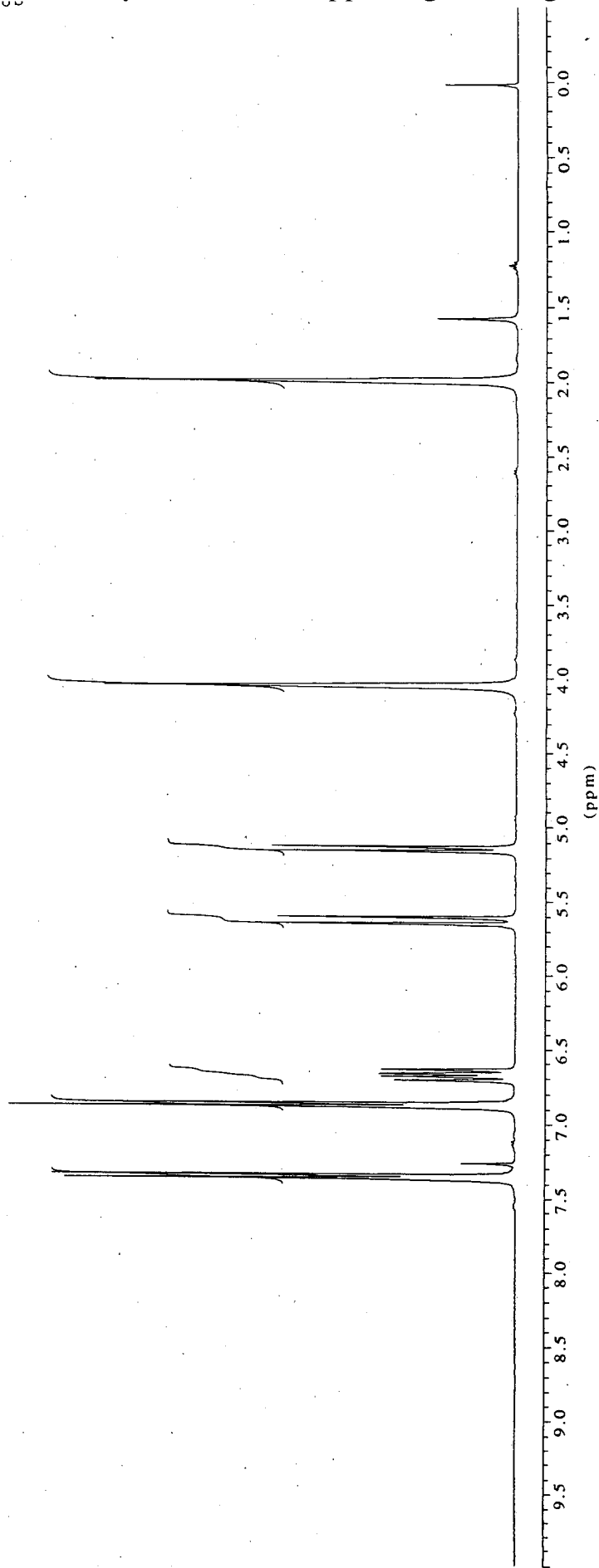


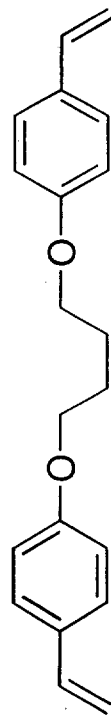


2c

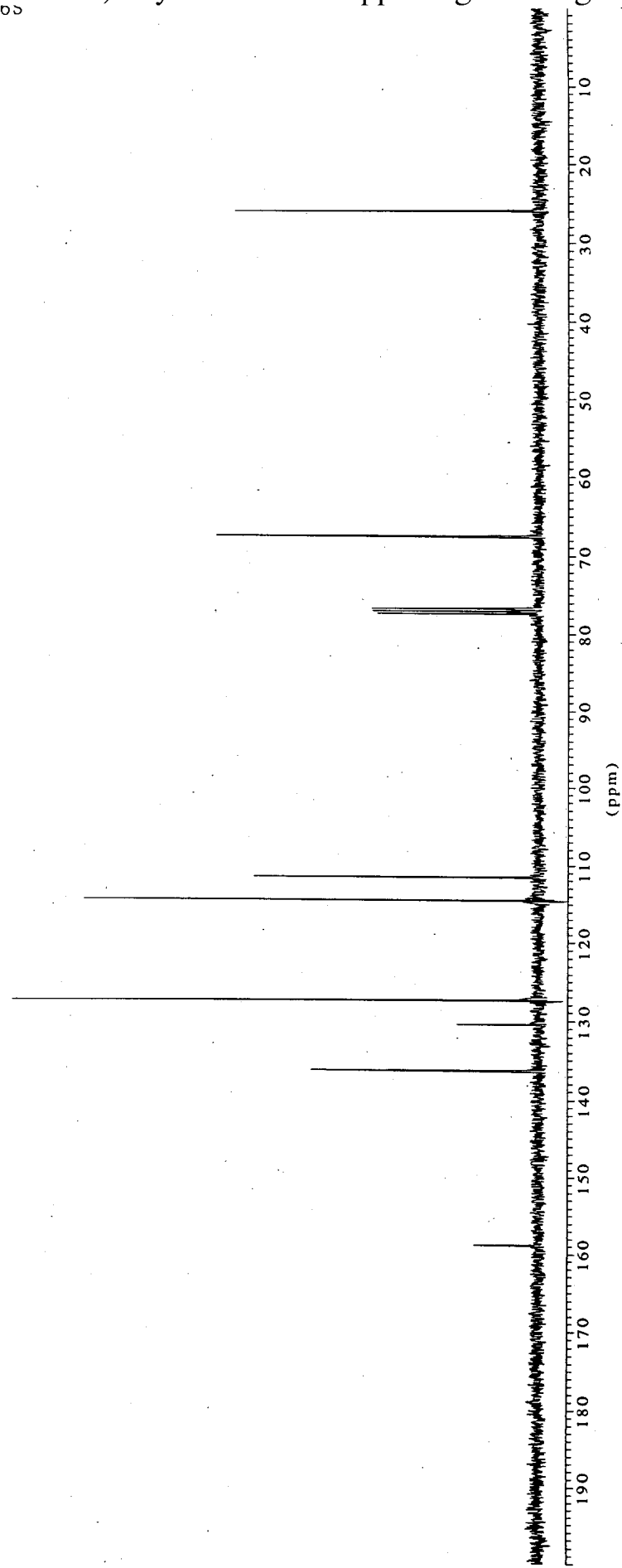


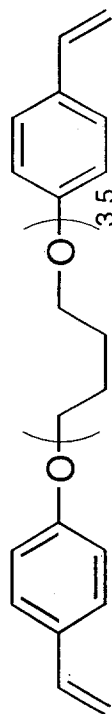
3a



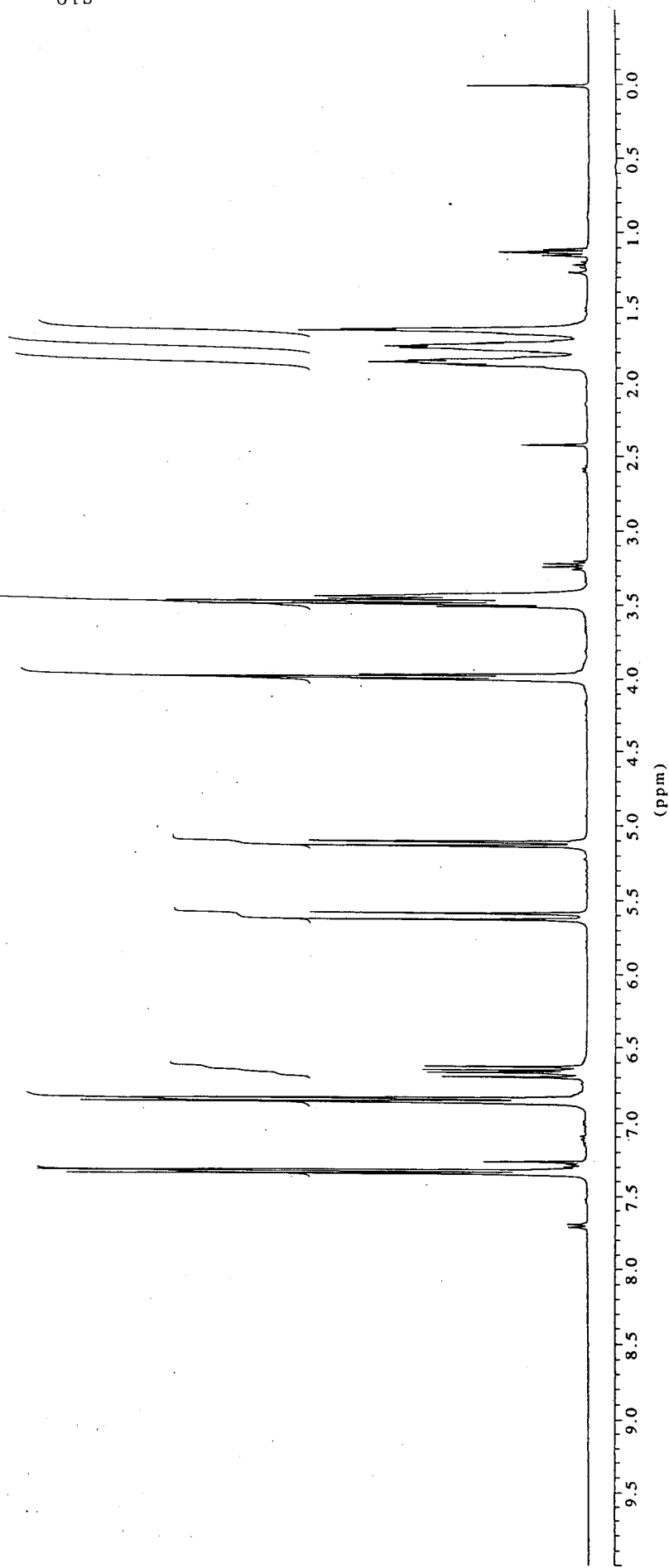


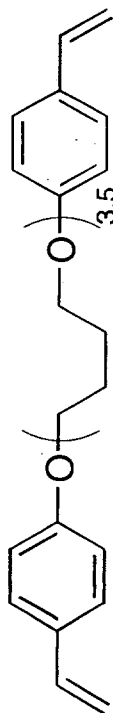
3a



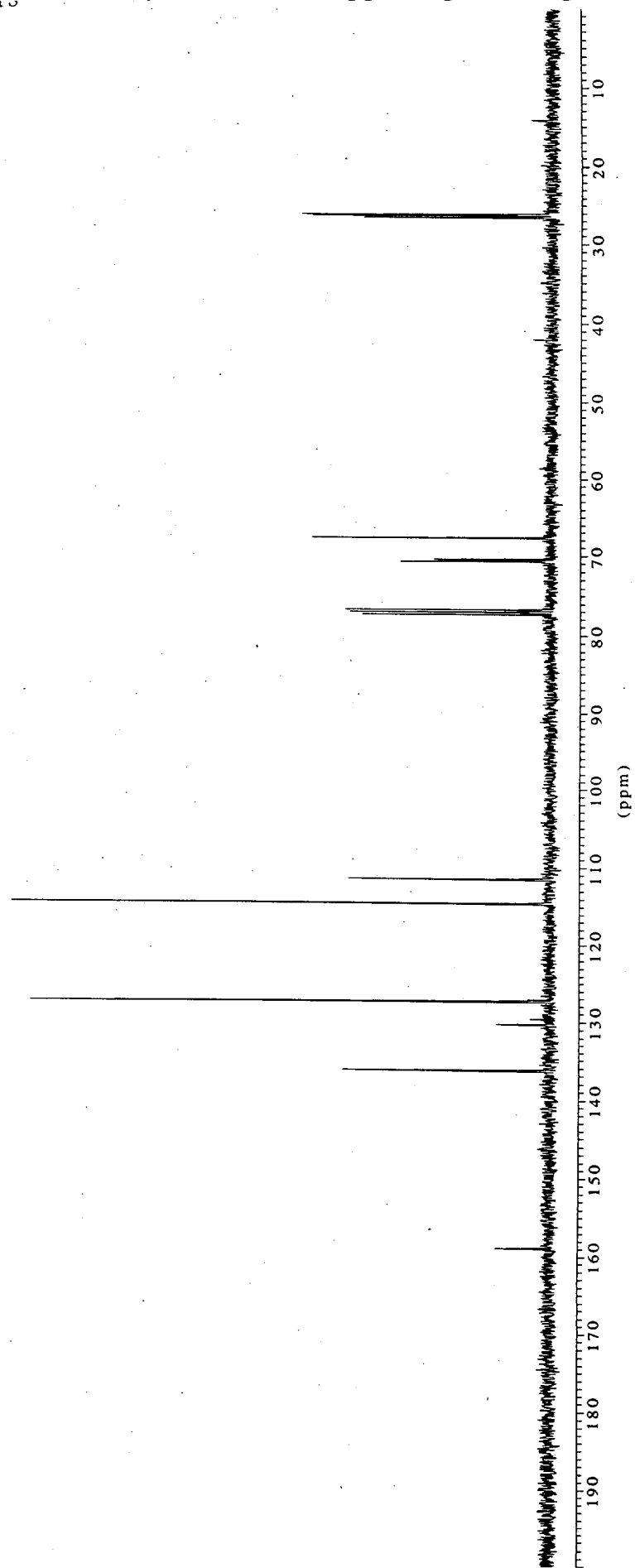


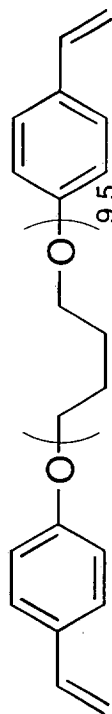
3b



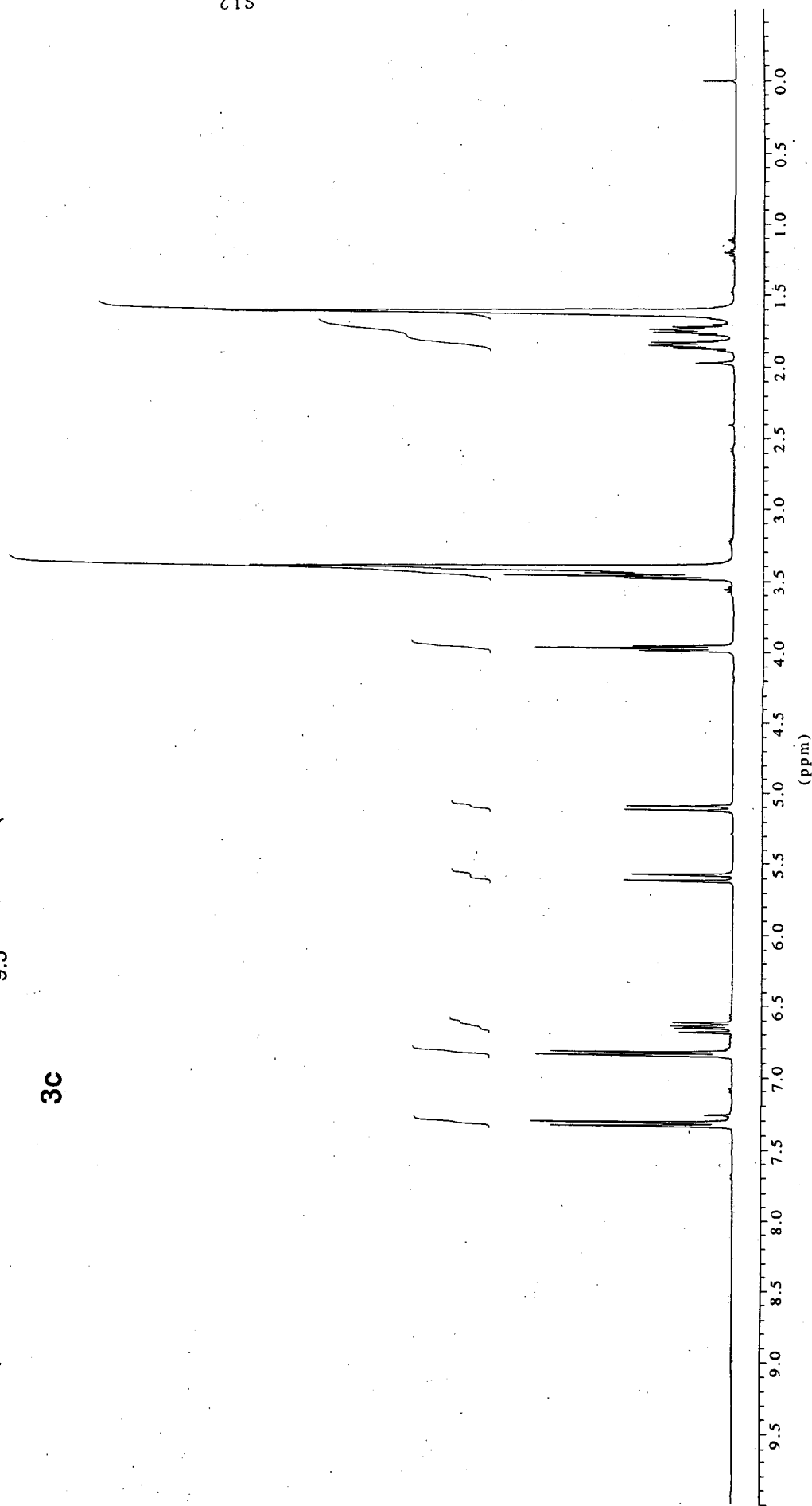


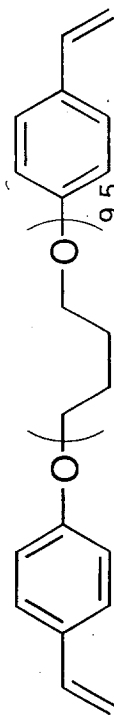
3b



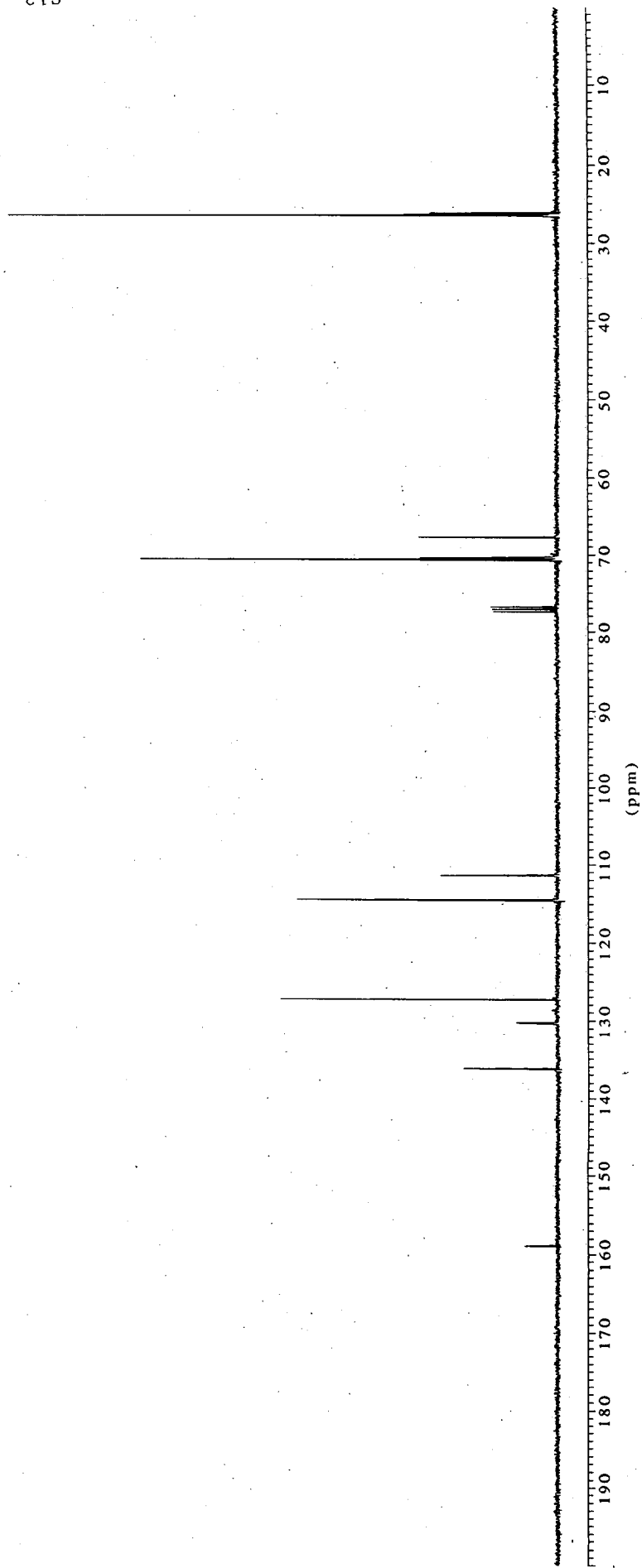


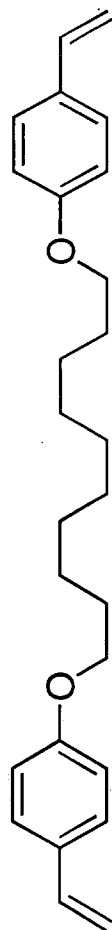
3c



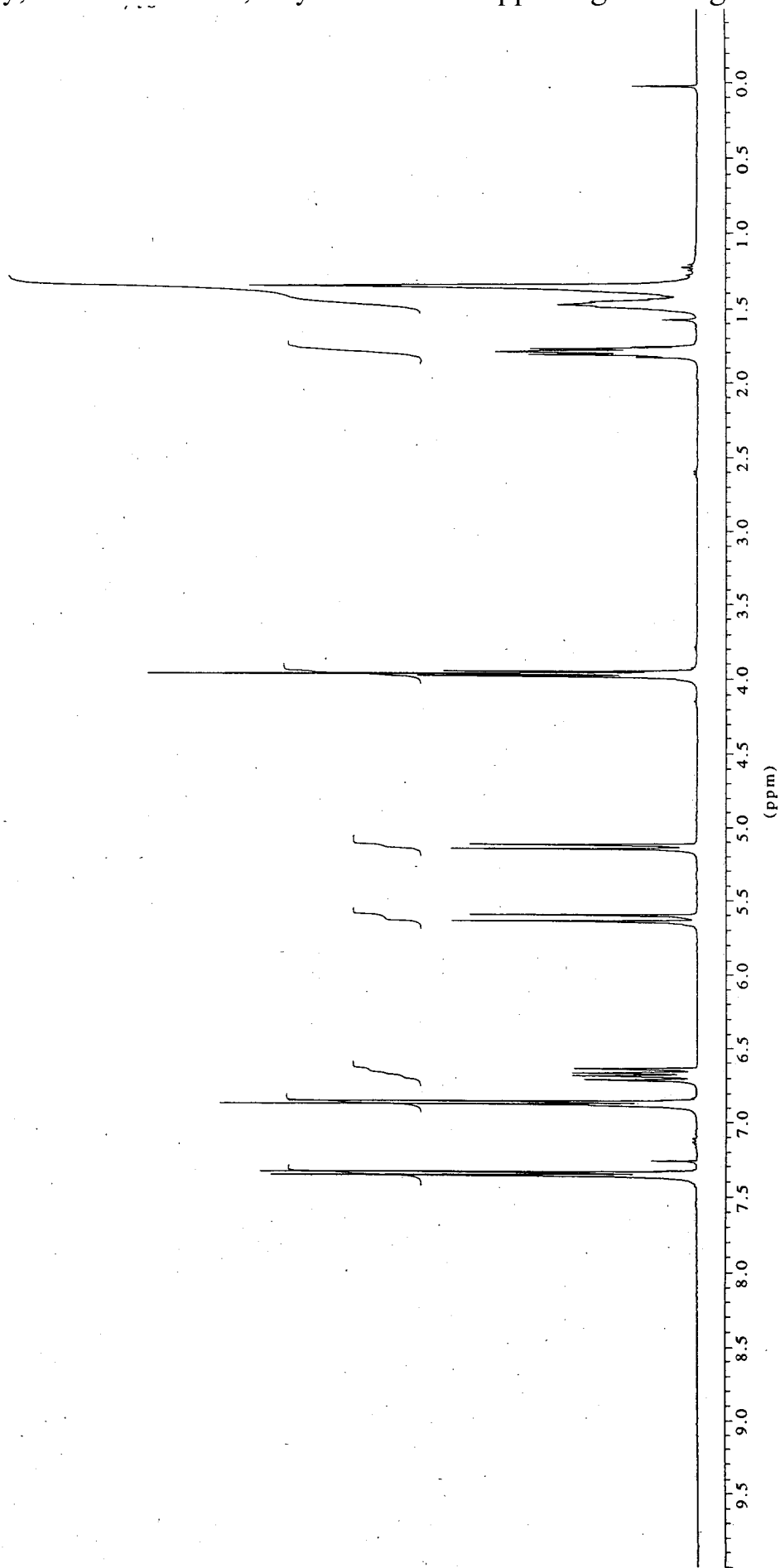


3c

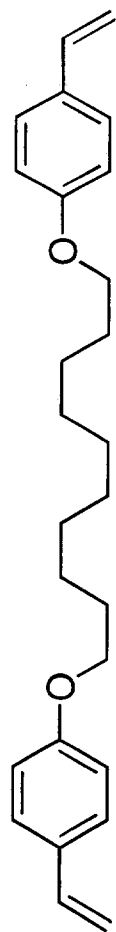




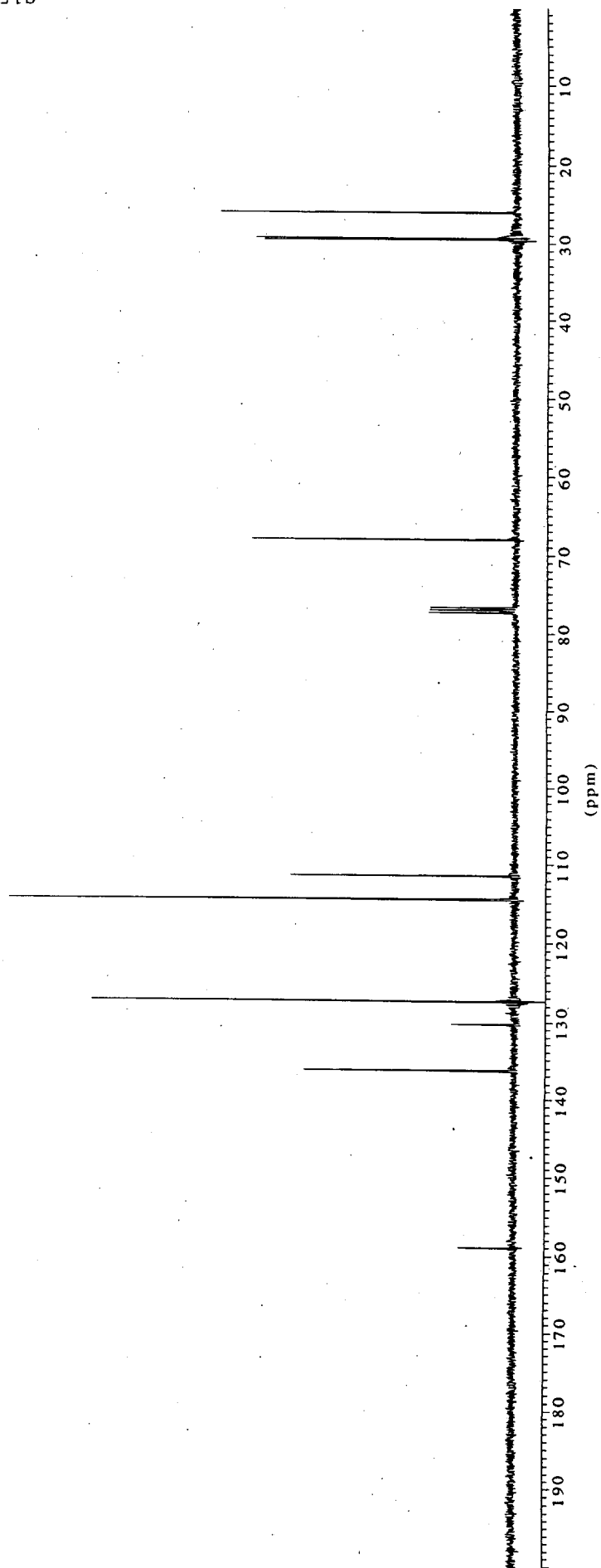
3d



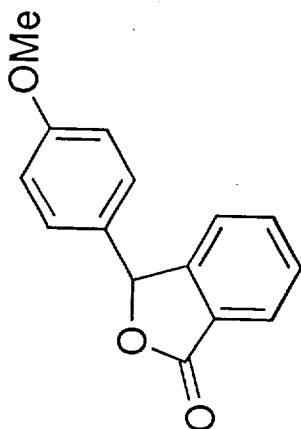
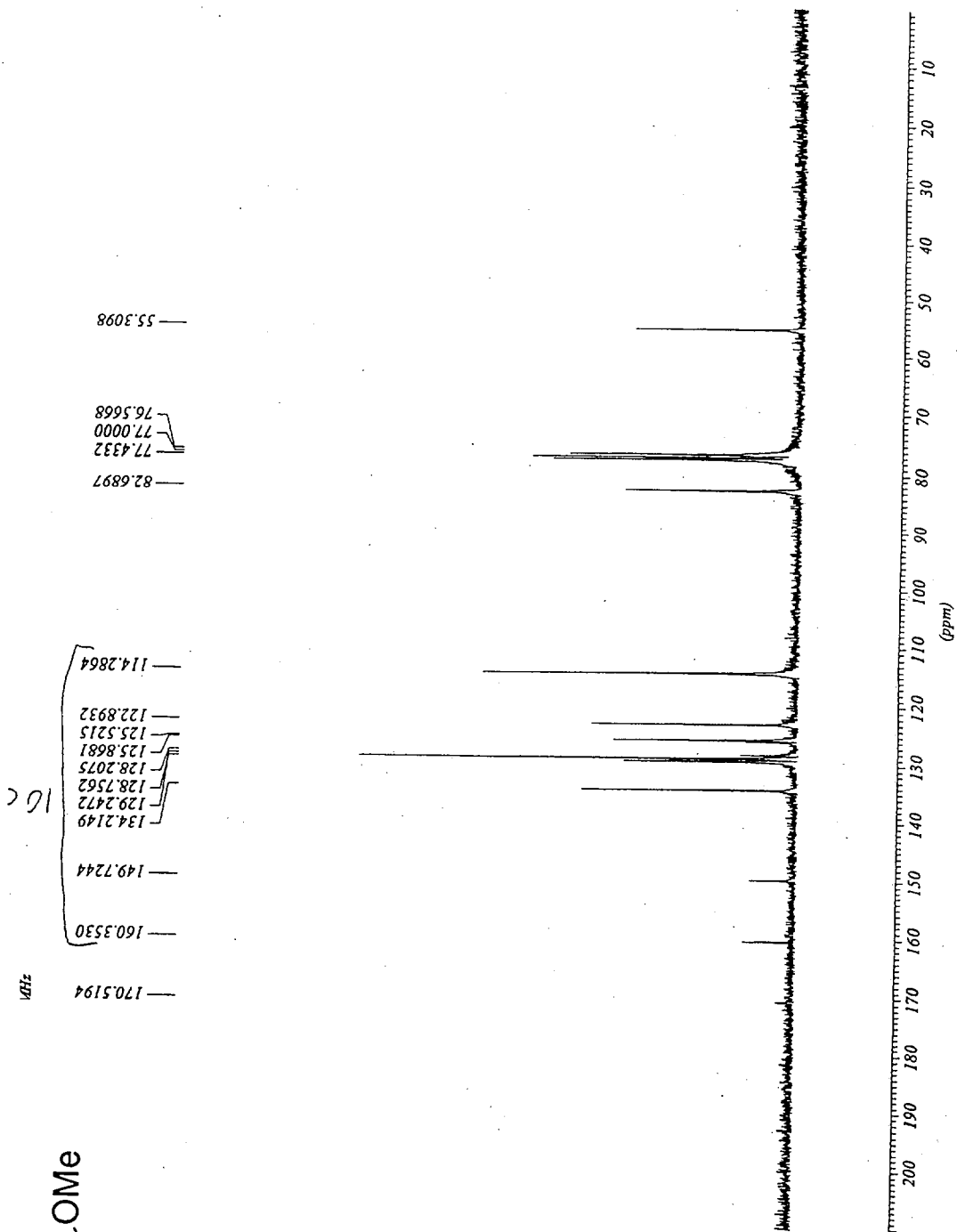
S1S



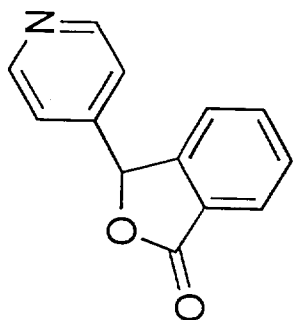
3d



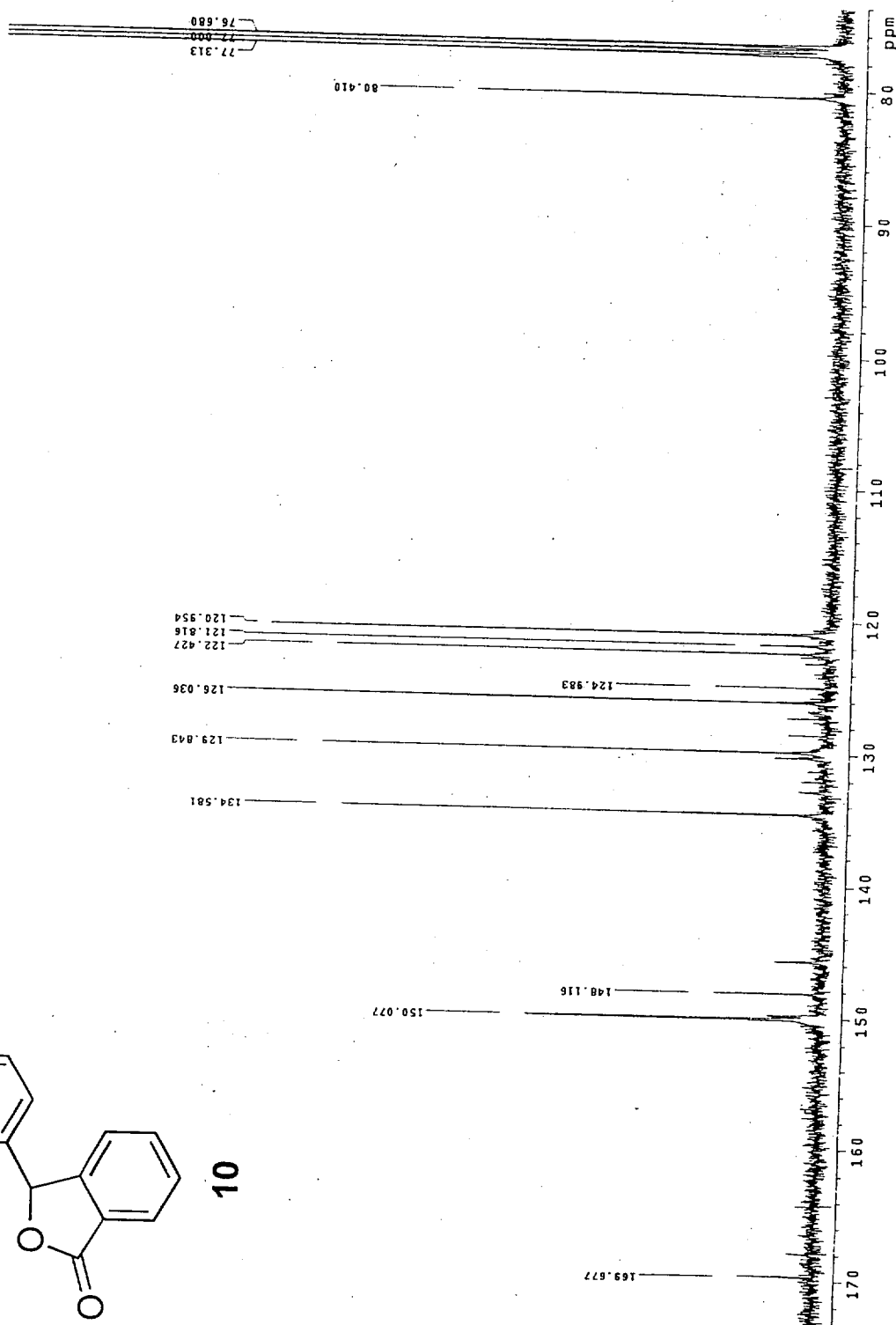
CK

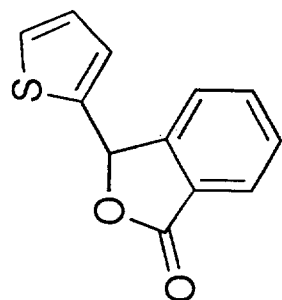


6



10





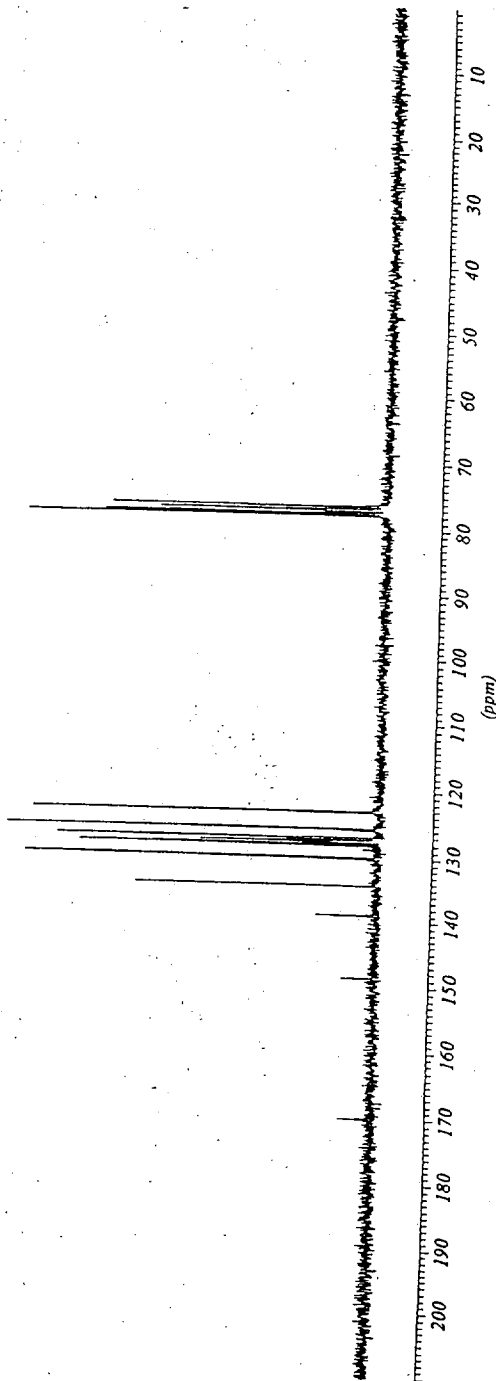
11

169.7289

148.5833  
138.8192  
134.2901  
129.7610  
127.9082  
127.5259  
127.0259  
125.8496  
125.6437  
123.0850

10 C

77.8235 - C14  
77.5000  
77.0000  
76.4706



015

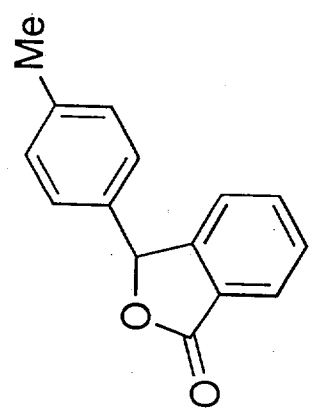
OK

21.2003 (H)

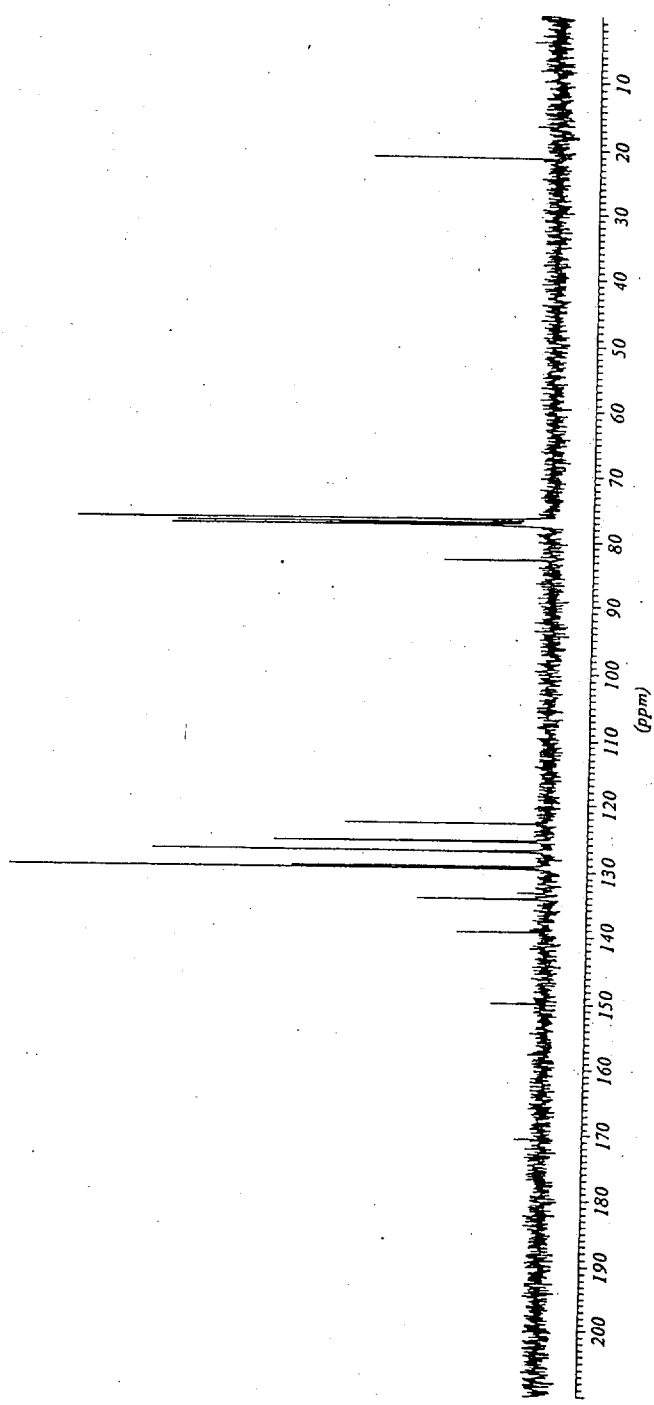
82.7475 (H)  
77.4044  
77.0000  
76.5668

149.7822  
139.2981  
134.2149  
133.3196  
129.5938  
129.2472  
127.0233  
125.6659  
125.5504  
122.8355

170.5482 (H)



12

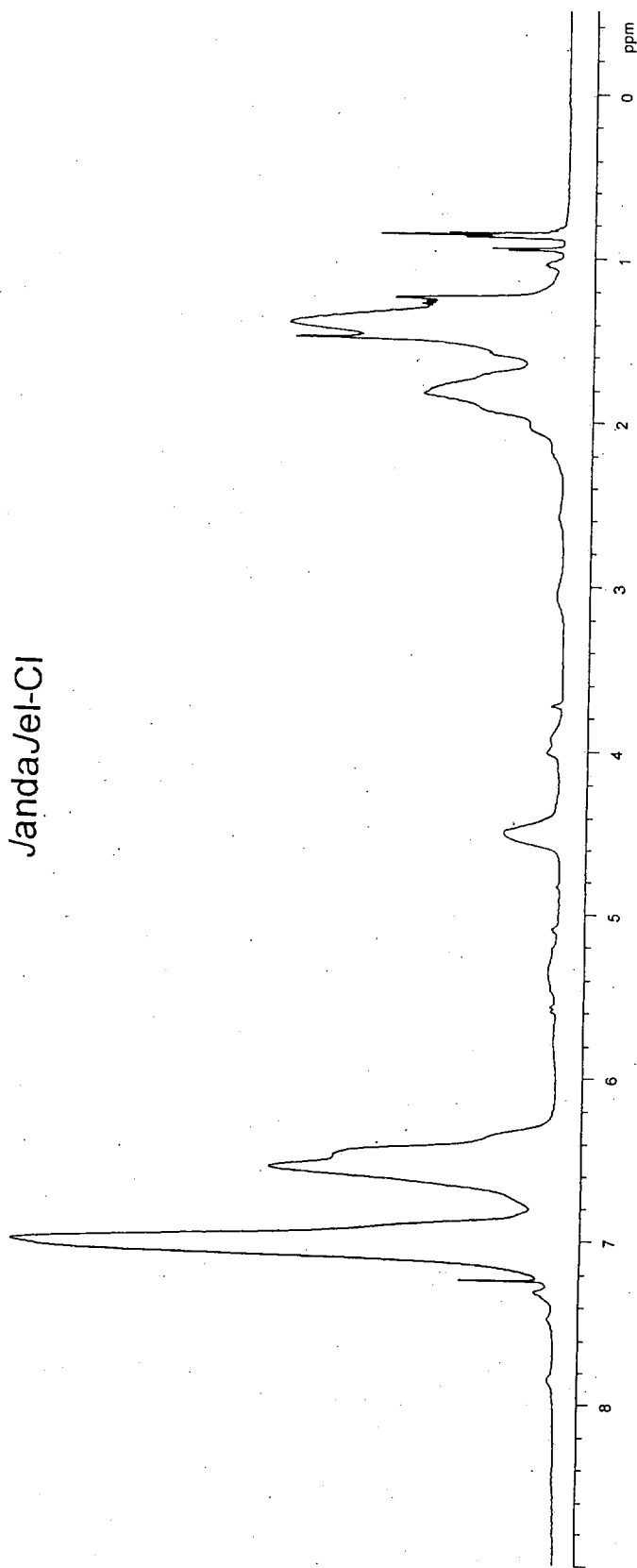


MAS  $^1\text{H}$  NMR



JandaJel-Cl

a



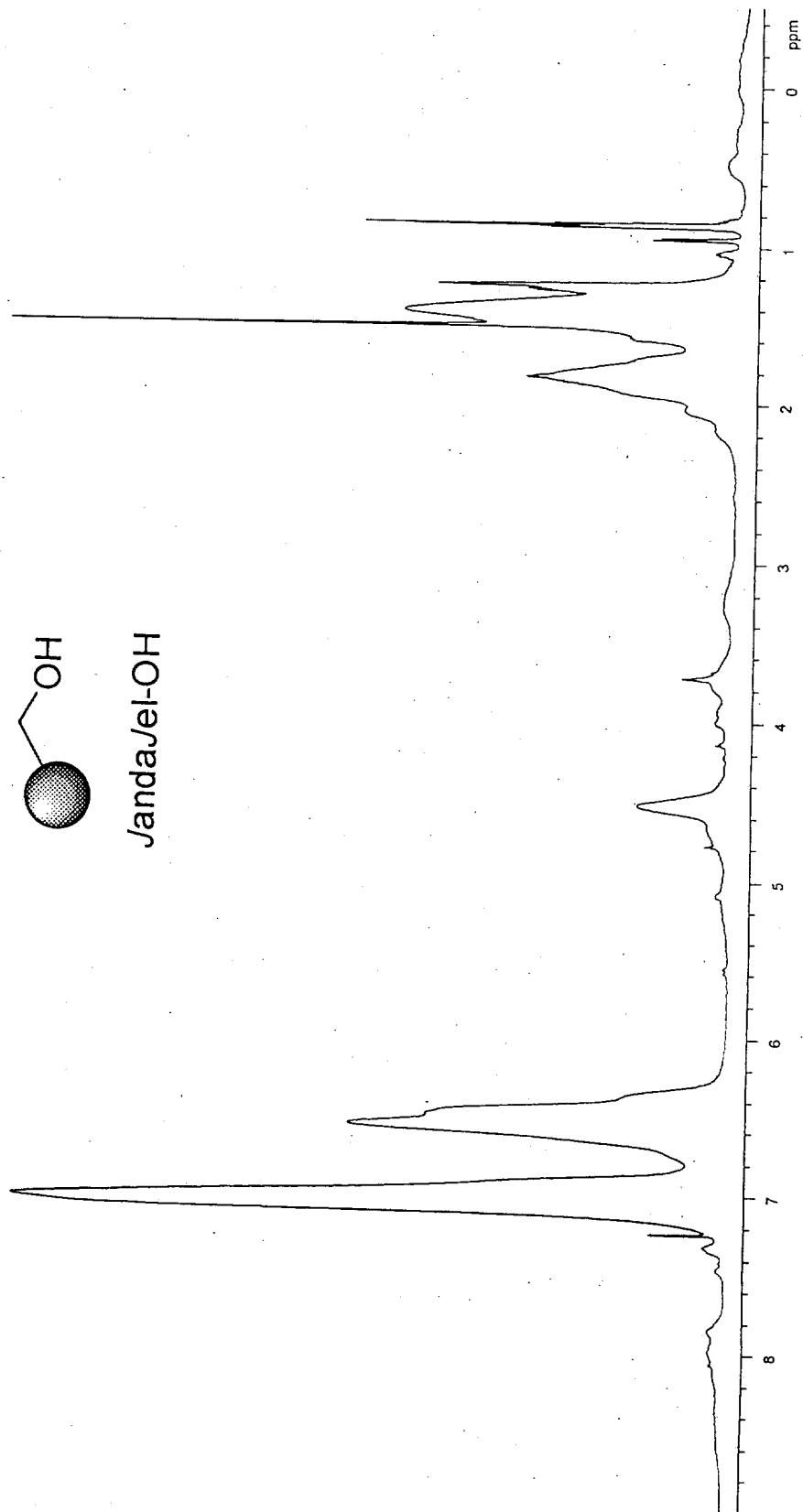
125

MAS  $^1\text{H}$  NMR

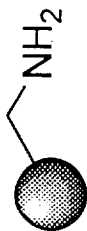


JandaJel-OH

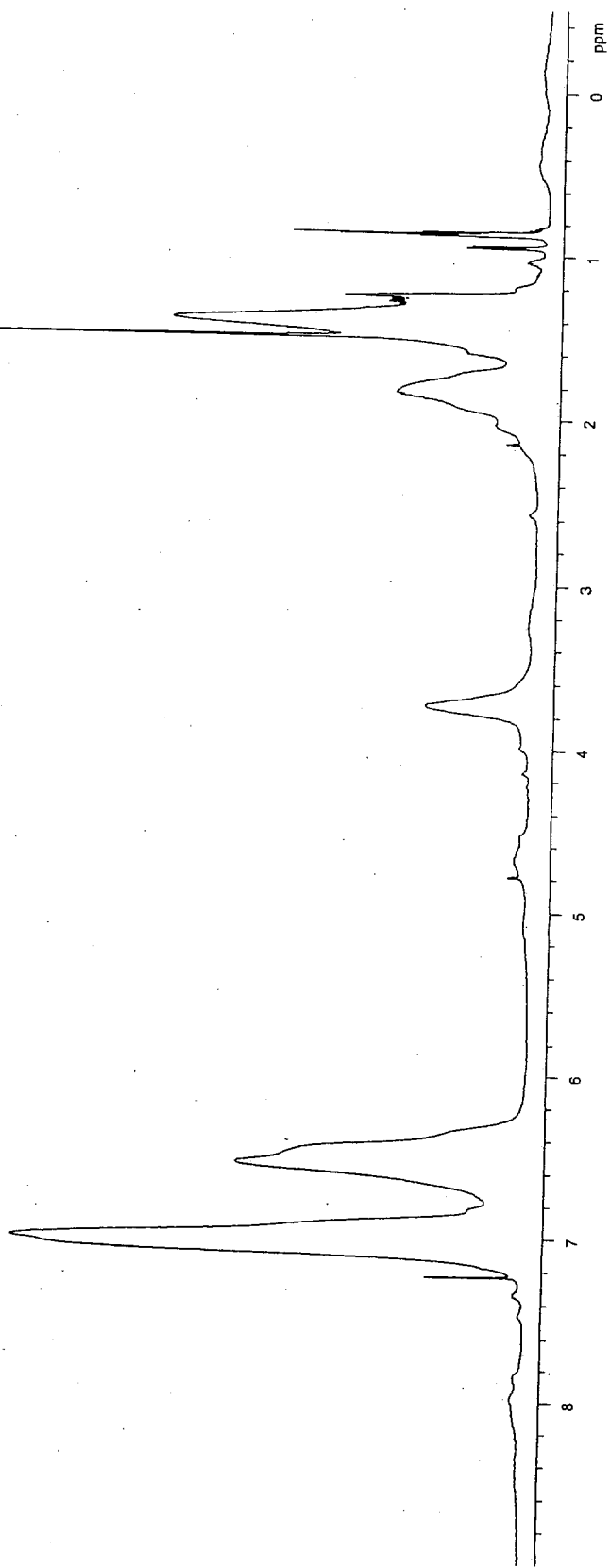
b



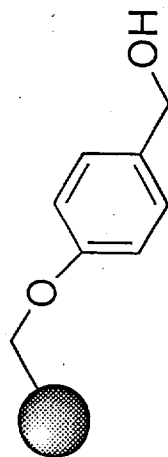
MAS  $^1\text{H}$  NMR



JandaJel-NH<sub>2</sub>

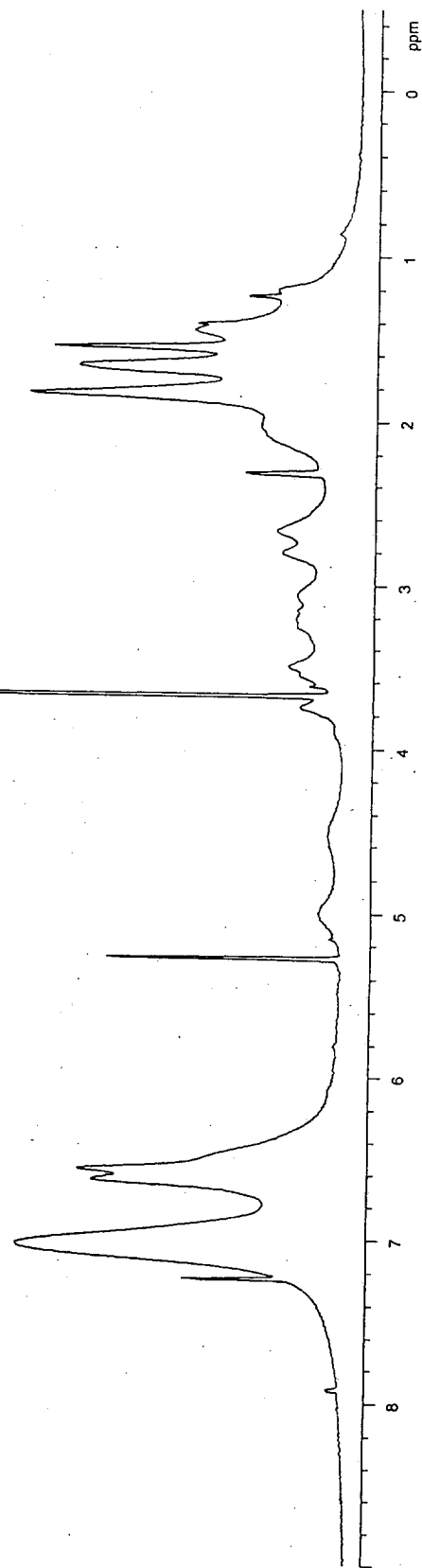


MAS  $^1\text{H}$  NMR



Janda/Jel-Wang

d



MAS HMQC spectrum



Janda/Jel-Cl

a\_hmqc

