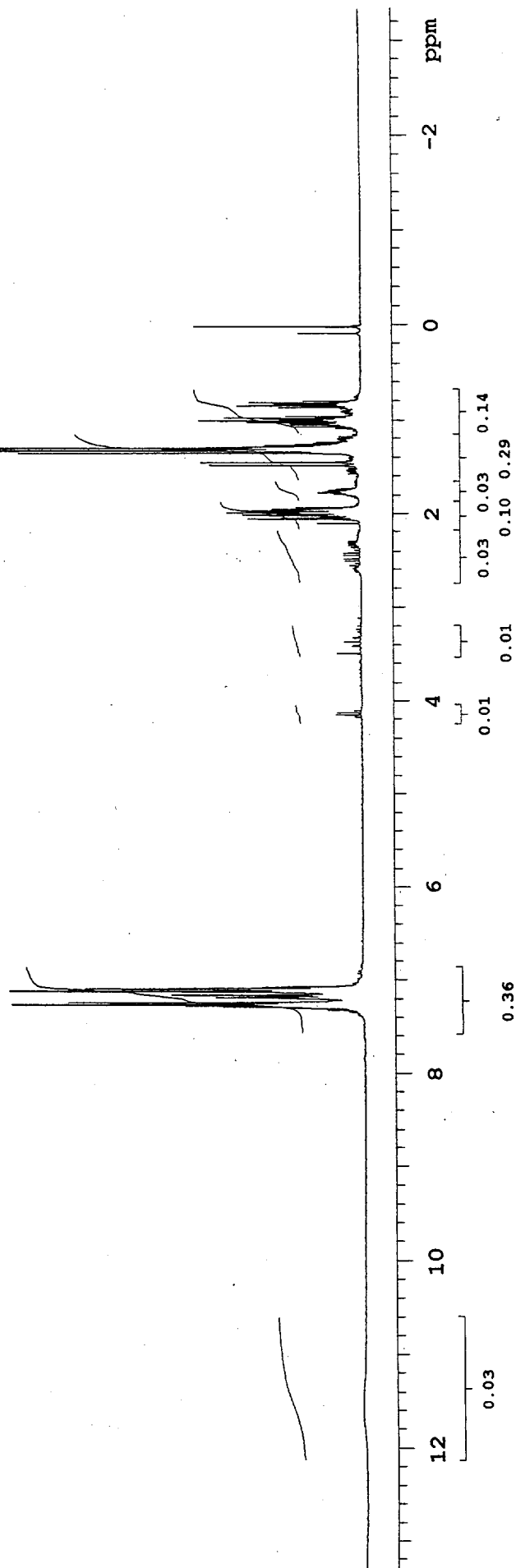
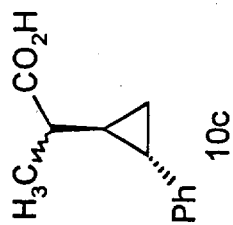
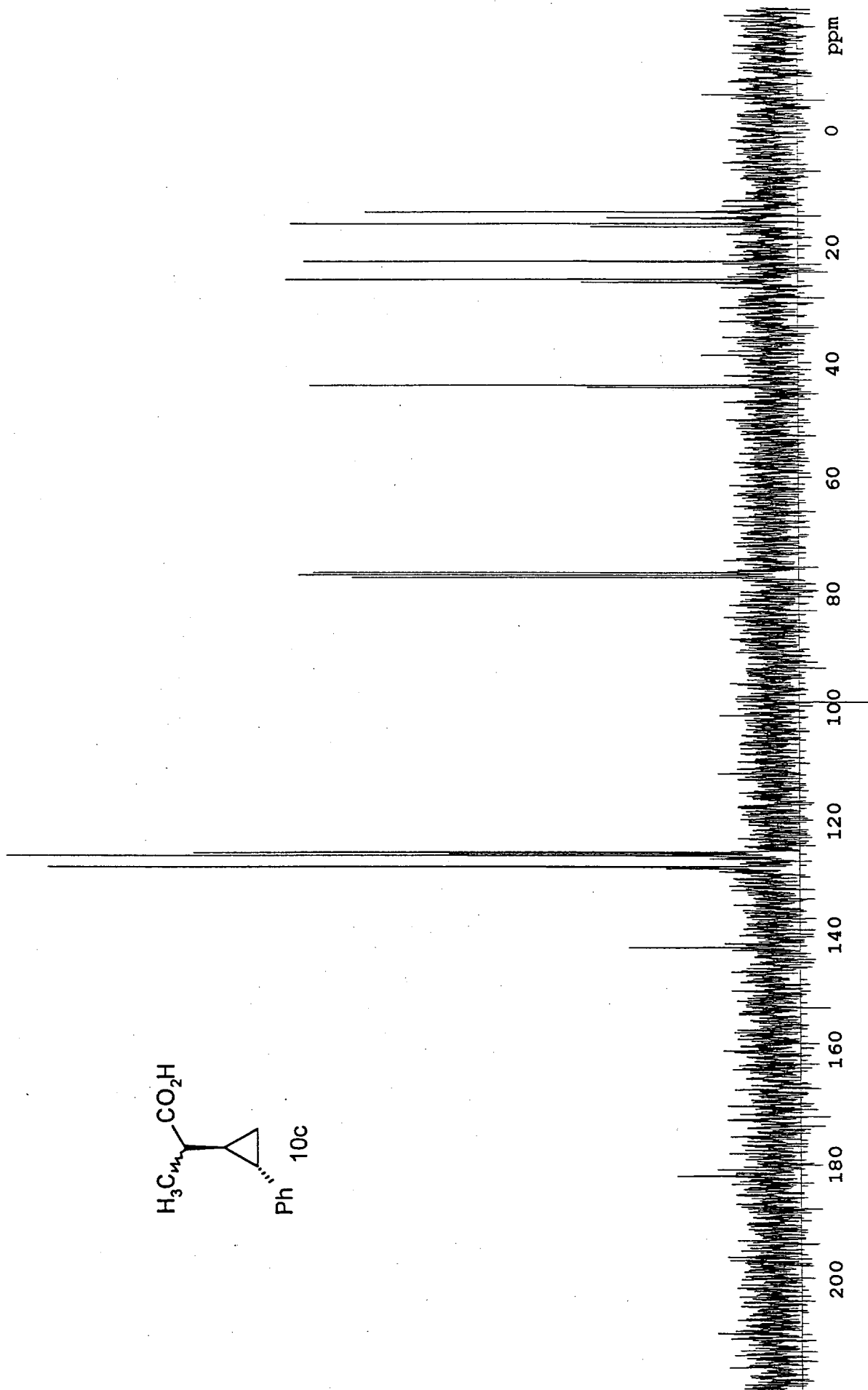
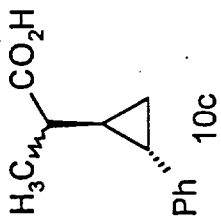


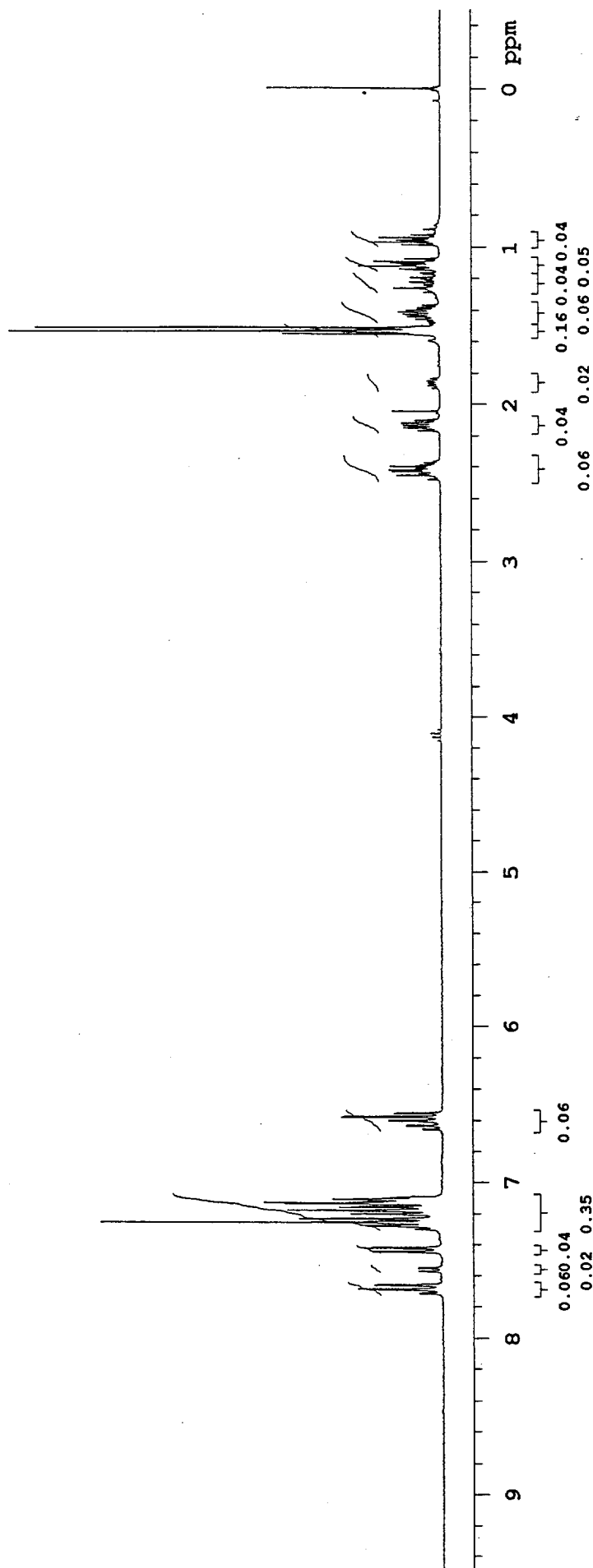
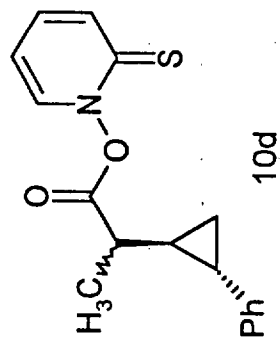
Proton Spectra
syc_g1_221555Apr21997.fid
acid



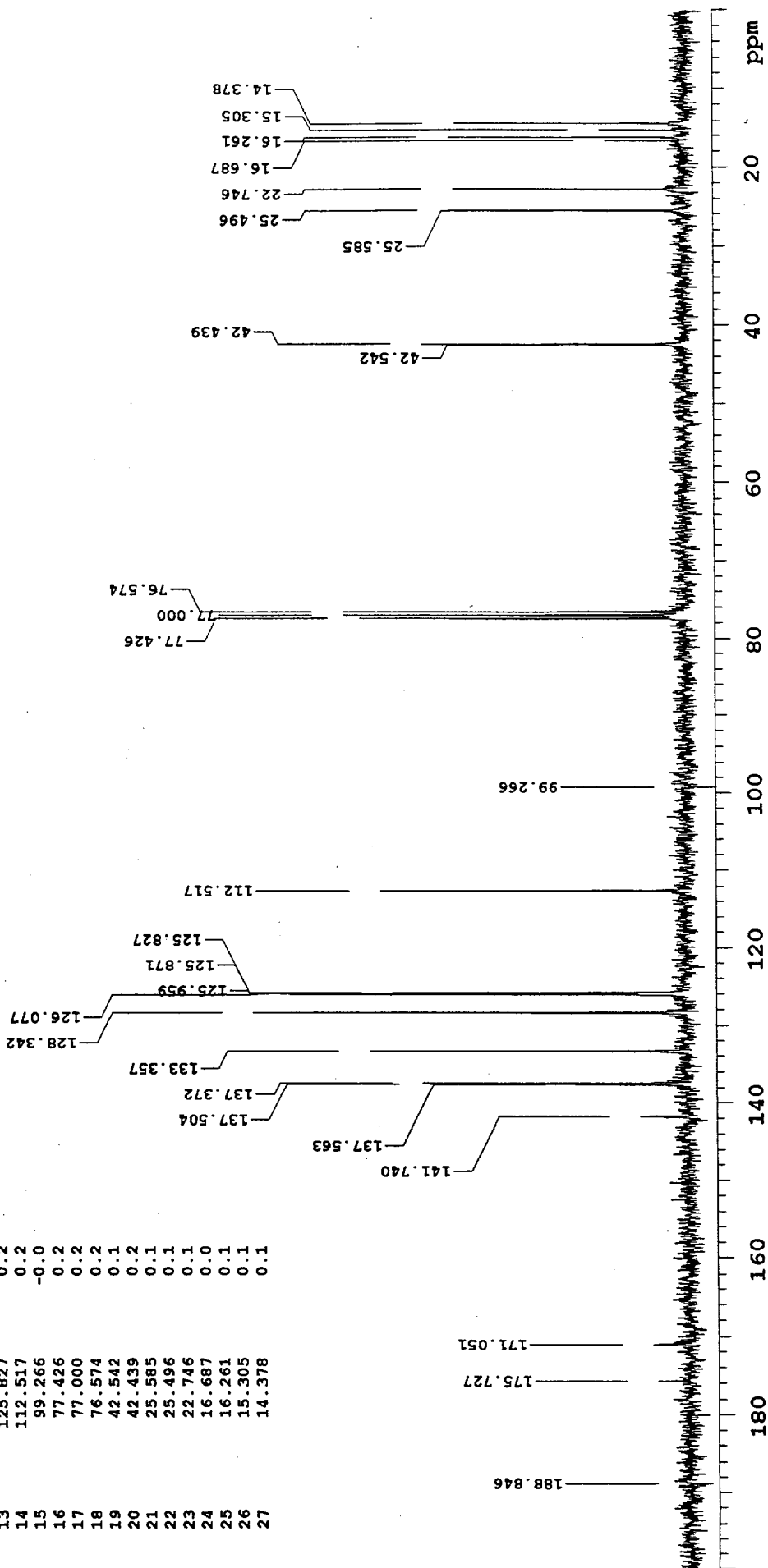
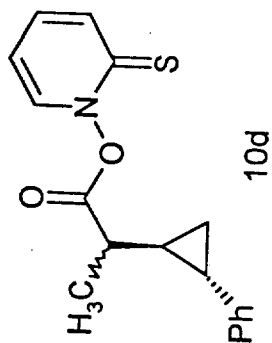
Carbon Spectra
syc_g2_221849Apr21997.fid



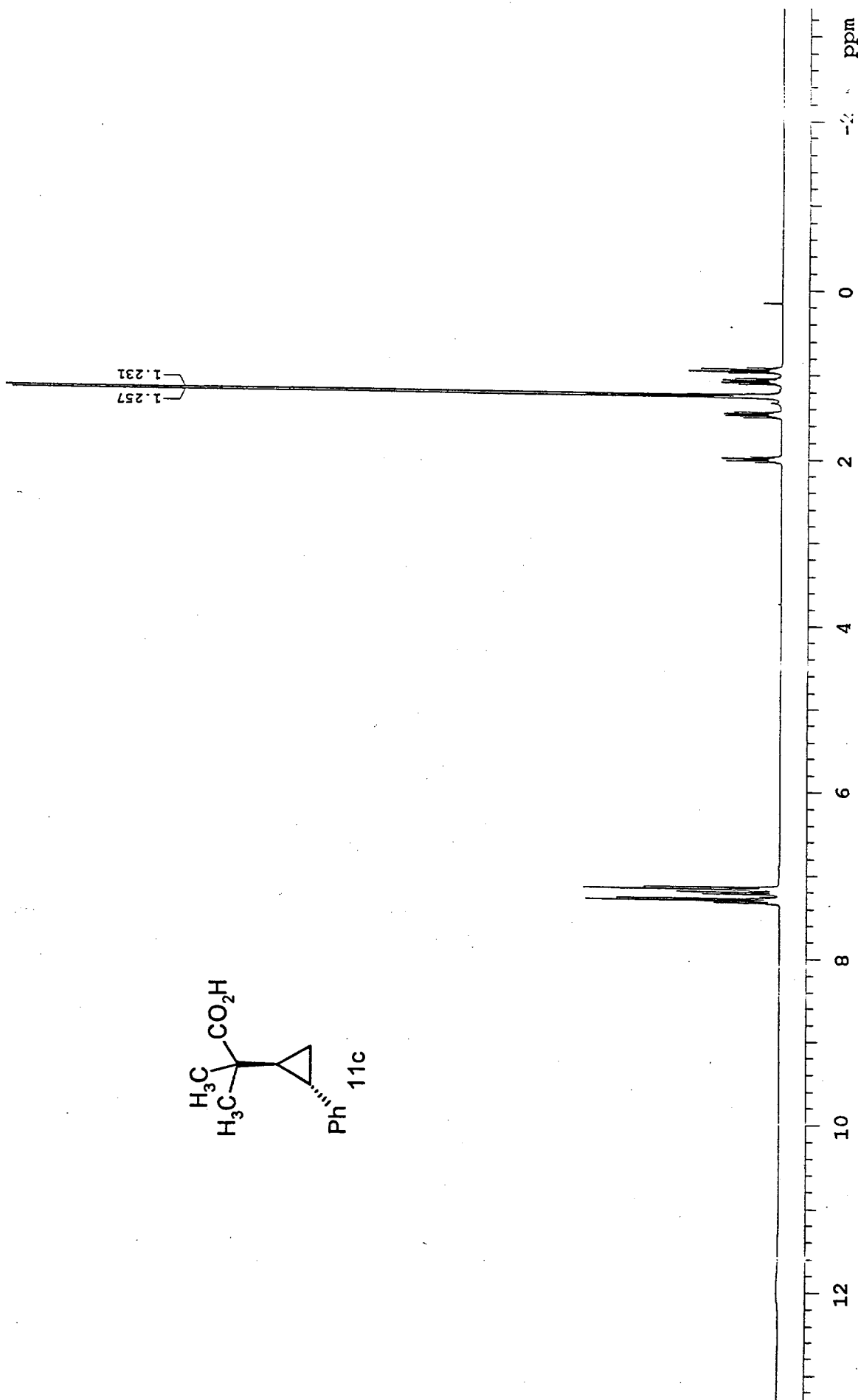
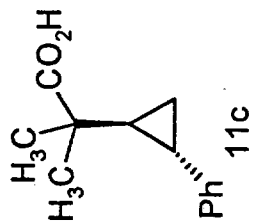
Proton Spectra
sync_g1_143622Apr41997.fid
alpha-methyl phenylcyclopropyl PTOC



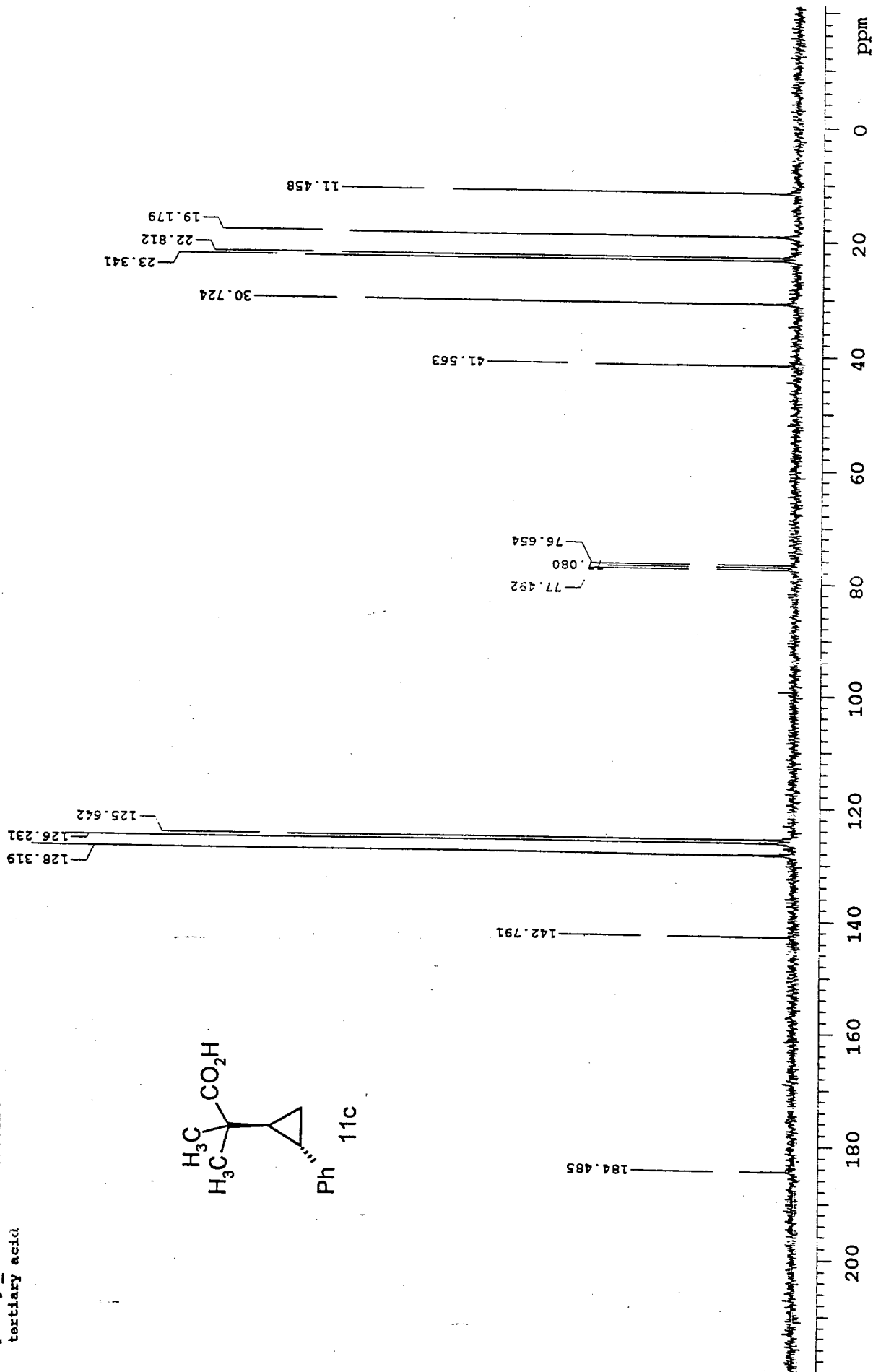
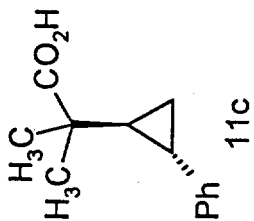
INDEX	FREQUENCY (PPM)	HEIGHT
1	188.846	-0.0
2	175.727	0.0
3	171.051	0.0
4	141.740	0.0
5	137.563	0.1
6	137.504	0.2
7	137.372	0.2
8	133.357	0.2
9	128.342	0.3
10	126.077	0.2
11	125.959	0.1
12	125.871	0.1
13	125.827	0.2
14	112.517	0.2
15	99.266	-0.0
16	77.426	0.2
17	77.000	0.2
18	76.574	0.2
19	42.542	0.1
20	42.439	0.2
21	25.585	0.1
22	25.496	0.1
23	22.746	0.1
24	16.687	0.0
25	16.261	0.1
26	15.305	0.1
27	14.378	0.1



Proton Spectra
pht_g1_140648Jul301997.f1d
tertiary acid



Carbon Spectra
pht_g2_14102Jul301997.fid
tertiary acid



Carbon Spectra
syc_g2_120001Aug51997.fid
Pat's 3 acid PTOC-ester

