

Supporting information for:

Direct Radical Polymerization of 4-Styryldiphenylphosphine: Preparation of
Cross-Linked and Noncross-Linked Triphenylphosphine Containing
Polystyrene Polymers

*Matthew Kwok Wai Choi, Helen Song He and Patrick H. Toy**

Department of Chemistry, The University of Hong Kong, Pokfulam Road, Hong Kong,
People's Republic of China.

Contents:

¹ H, ¹³ C and ³¹ P NMR spectra of 1	S2-S3
¹ H, ¹³ C and ³¹ P NMR spectra of 2	S4-S5
¹ H, ¹³ C spectra of Mitsunobu reaction products.....	S6-S16
¹ H, ¹³ C spectra of Mitsunobu reaction products.....	S17-S22

General Procedures. All reagents were used as received. All moisture sensitive reactions were carried out in dried glassware under a nitrogen atmosphere. Tetrahydrofuran was distilled under a nitrogen atmosphere over sodium and benzophenone. Dichloromethane was distilled under a nitrogen atmosphere over calcium hydride. Silica gel 60 (230-400 mesh) was used for chromatography. Thin layer chromatography analysis was performed using silica gel 60 F₂₅₄.

Current Data Parameters
 NAME Exp18092
 EXNO 180
 PROCNO 2

F2 - Acquisition Parameters
 Date_ 20021212
 Time 10 05
 INSTRUM dp300
 PROCNO DUAL 5sm

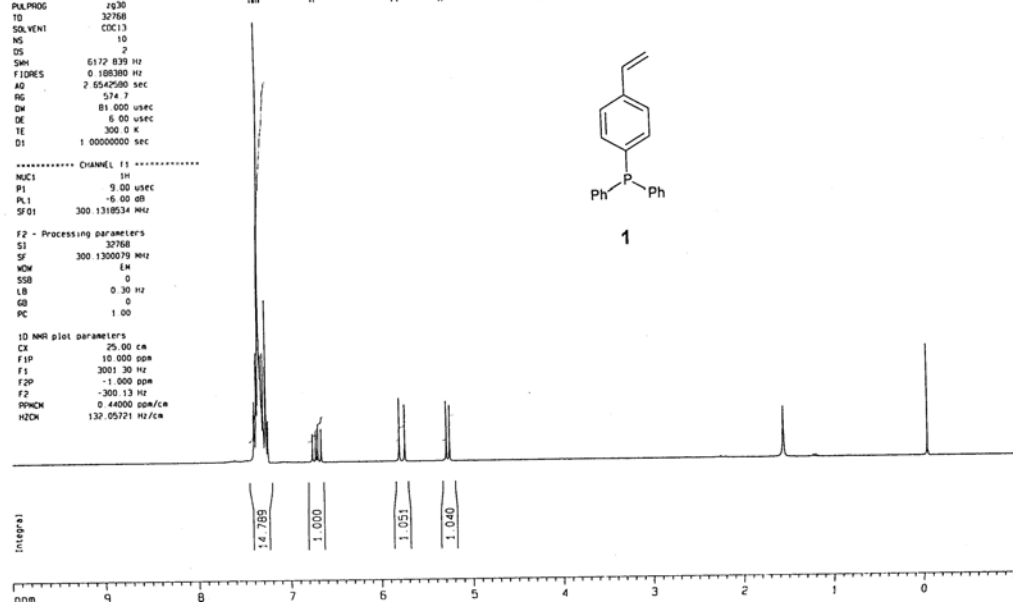
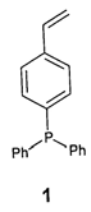
PULPROG zg30
 TD 32768
 SOLVENT CDCl3
 NS 10
 DS 2
 SWH 6172.839 Hz
 FIDRES 0.108380 Hz
 AQ 2.654200 sec
 RG 514.7
 DM 81.000 usec
 DE 6.00 usec
 TE 300.0 K
 D1 1.0000000 sec

----- CHANNEL f1 -----
 NUC1 31P
 P1 9.00 usec
 PL1 -6.00 dB
 SF01 300.1318534 MHz

F2 - Processing parameters
 SI 32768
 SF 300.1300070 MHz
 WDW EM
 SSB 0
 LB 0.30 Hz
 GB 0
 PC 1.00

1D NMR plot parameters
 CX 25.00 cm
 F1P 10.000 ppm
 F1 3001.30 Hz
 F2P -1.000 ppm
 F2 -300.13 Hz
 PPMCH 0.44000 ppm/cm
 HZCM 137.05721 Hz/cm

ppm
 7.3638
 7.3590
 7.3340
 7.3288
 7.3197
 7.3110
 7.2895
 7.2645
 7.2545
 6.6920
 6.6557
 5.8023
 5.7896
 5.7437
 5.7403
 5.2933
 5.2802
 5.2662
 5.2540



Current Data Parameters
 NAME Exp18092
 EXNO 201
 PROCNO 3

F2 - Acquisition Parameters
 Date_ 20030516
 Time 16 03
 INSTRUM dp300
 PROCNO DUAL 5sm

PULPROG zgpg30
 TD 32768
 SOLVENT CDCl3
 NS 115
 DS 1
 SWH 18832.393 Hz
 FIDRES 0.574719 Hz
 AQ 0.870404 sec
 RG 8192
 DM 26.550 usec
 DE 6.00 usec
 TE 300.0 K
 D1 2.5000000 sec
 D11 0.0300000 sec

----- CHANNEL f1 -----
 NUC1 13C
 P1 7.00 usec
 PL1 -6.00 dB
 SF01 75.4760264 MHz

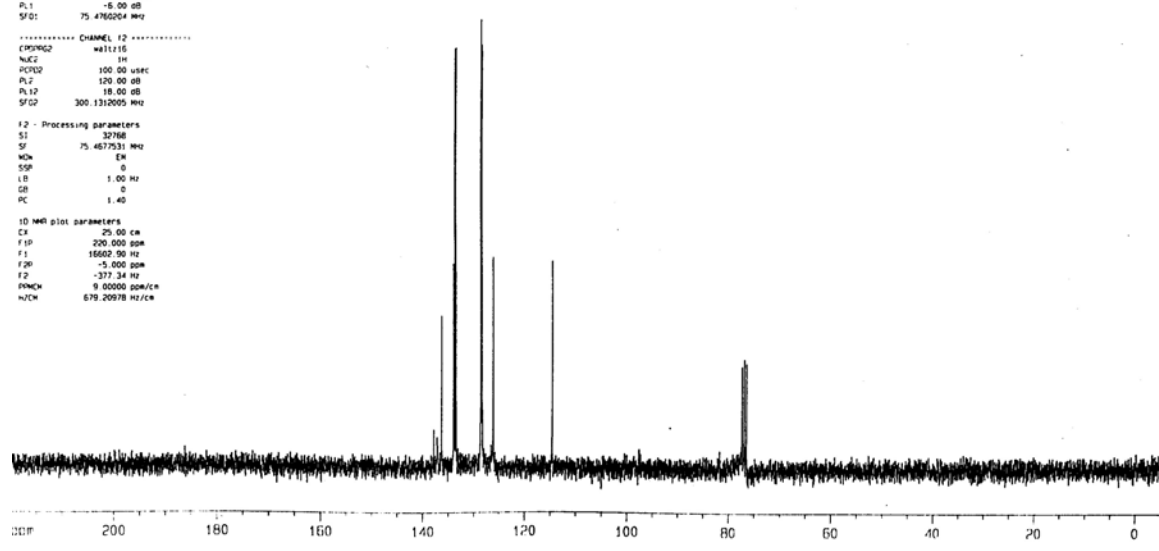
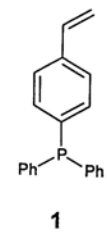
----- CHANNEL f2 -----
 (CPDPRG2) waltz16
 NUC2 1H
 PCPD2 100.00 usec
 PL2 120.00 dB
 PL12 18.00 dB
 SF02 300.1312005 MHz

F2 - Processing parameters
 SI 32768
 SF 75.467531 MHz
 WDW EM
 SSB 0
 LB 1.00 Hz
 GB 0
 PC 1.40

1D NMR plot parameters
 CX 25.00 cm
 F1P 200.000 ppm
 F1 15602.90 Hz
 F2P -5.000 ppm
 F2 -377.34 Hz
 PPMCH 0.00000 ppm/cm
 HZCM 678.20978 Hz/cm

ppm
 137.909
 137.208
 136.357
 134.037
 133.809
 133.780
 133.551
 128.698
 128.524
 128.432
 126.301
 126.207
 114.616

77.423
 76.989
 76.575



Current Data Parameters
NAME Exp180P3-P
EXPNO 180
PROCNO 3

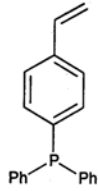
F2 - Acquisition Parameters
Date_ 20021212
Time 19.40
INSTRUM av400
PROBHD 5 mm QNP 1H/13
PULPROG zgpg30
TD 32768
SOLVENT CDCl3
NS 16
DS 4
SWH 64935.066 Hz
FIDRES 1.981661 Hz
AQ 0.2523636 sec
RG 16384
DM 7.700 usec
DE 8.00 usec
TE 300.0 K
D1 2.0000000 sec
d11 0.0300000 sec
d12 0.0002000 sec

***** CHANNEL f1 *****
NUC1 31P
P1 4.90 usec
PL1 -5.00 dB
SFO1 161.9753930 MHz

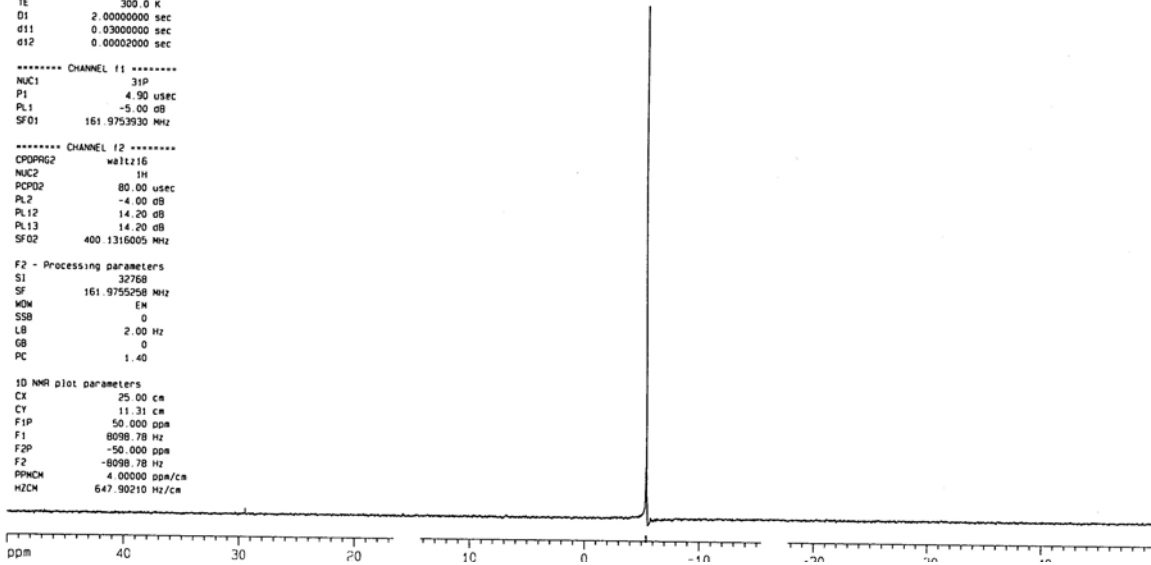
***** CHANNEL f2 *****
CPDPRG2 waltz16
NUC2 1H
PCPD2 80.00 usec
PL2 -4.00 dB
PL12 14.20 dB
PL13 14.20 dB
SFO2 400.1316005 MHz

F2 - Processing parameters
SI 32768
SF 161.9755258 MHz
WDW EK
SSB 0
LB 2.00 Hz
GB 0
PC 1.40

1D NMR plot parameters
CX 25.00 cm
CY 11.31 cm
FIP 50.000 ppm
F1 8098.78 Hz
F2P -50.000 ppm
F2 -8098.78 Hz
PPHCH 4.00000 ppm/cm
HZCH 647.90210 Hz/cm



1



Current Data Parameters
 NAME Exp190P2
 EXPHO 190
 PROCNO 2

F2 - Acquisition Parameters
 Date_ 20030104
 Time 12:27
 INSTRUM gpc300
 PROBNM DUAL 5mm

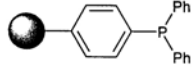
PULPROG zg30
 TD 32768
 SOLVENT CDCl3
 NS 105
 DS 2
 SMH 6172.839 Hz
 FIDRES 0.188360 Hz
 AQ 2.6542580 sec
 RG 1149.4
 DW 81.000 usec
 DE 6.00 usec
 TE 300.0 K
 D1 1.00000000 sec

----- CHANNEL f1 -----
 NUC1 1H
 P1 9.00 usec
 PL1 -6.00 dB
 SFO1 300.1318534 MHz

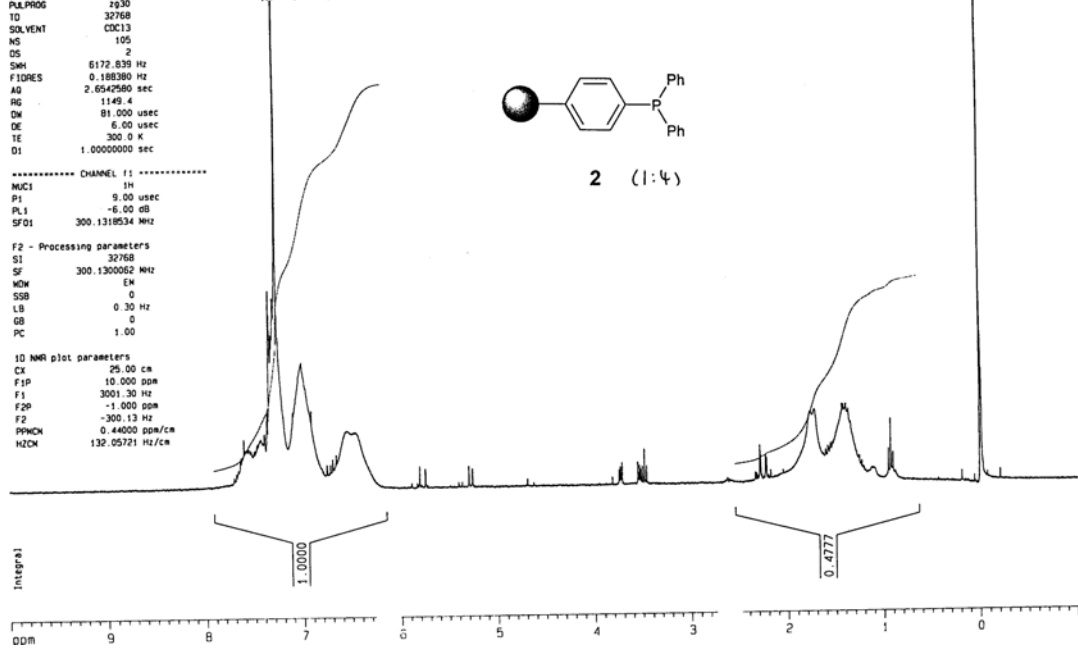
F2 - Processing parameters
 S1 32768
 SF 300.1300052 MHz
 WDW EM
 SSB 0
 LB 0.30 Hz
 GB 0
 PC 1.00

10 NMR plot parameters
 CX 25.00 cm
 F1P 10.000 ppm
 F1 3001.30 Hz
 F2P -1.000 ppm
 F2 -300.13 Hz
 PPHO1 0.4400 ppm/cm
 HZCM 132.05721 Hz/cm

7.3375
7.3359
7.3305
7.3254
7.3041
7.2817
7.2858
7.2604
7.2461
7.0005
6.9956
6.8579
6.8461
6.8357
6.8030
5.7471
5.7443
5.2963
5.2600
3.7300
3.7141
3.6516
3.6266
3.5809
3.5050
3.4831
3.4610
2.2845
2.2269
1.7585
1.7203
1.6041
1.5831
1.3542
1.3323
1.4324
1.4109
1.3033
1.2803
1.2517
1.2482
0.9500
0.9288
0.9045
0.0109
0.0001
-0.0109



2 (1:4)



```

Current Data Parameters
NAME      Exp018140P
EXPNO    181
PROCNO   2

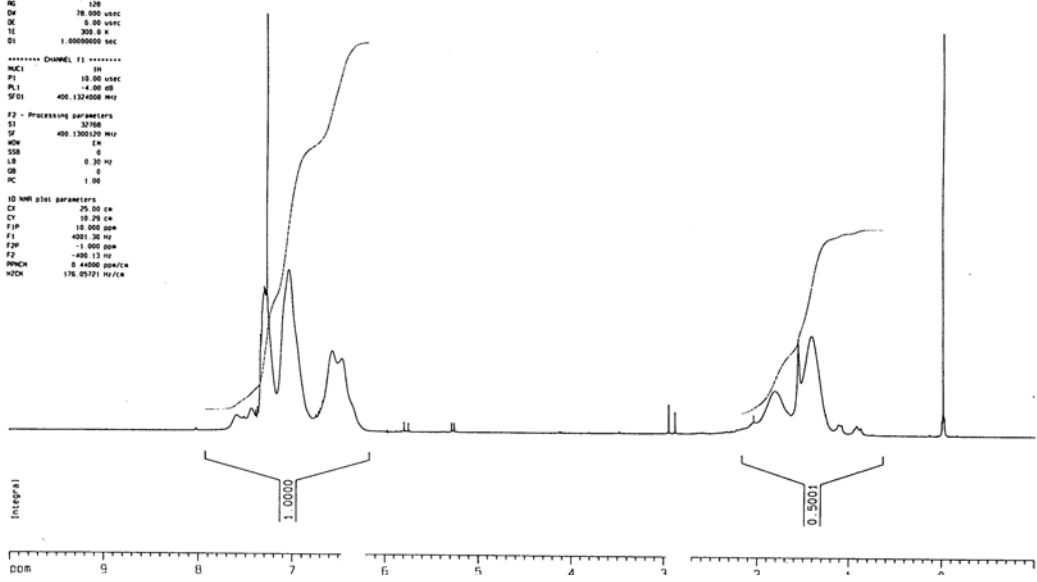
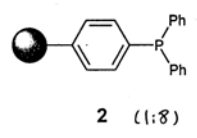
F2 - Acquisition Parameters
Date_    20030118
Time     9.48
INSTRUM  spect
PROBHD   5 mm QNP 1H/1
PULPROG  zg
TD        32768
SOLVENT  CDCl3
NS        4
DS        4
SWH       6410.256 Hz
FIDRES   0.19520 Hz
AQ        2.555914 sec
RG        128
DE        78.000 usec
TE        300.2 K
D1        1.0000000 sec

***** CHANNEL f1 *****
NUC1      31P
P1        18.00 usec
PL1       -4.00 dB
SFO1      400.1324000 MHz

F2 - Processing parameters
SI        32768
SF        400.1300170 MHz
WDW       EM
SSB       0
LB        0.30 Hz
GB        0
PC        1.00

1D NMR plot parameters
CX        25.00 cm
CY        10.29 cm
FIDP      15.000 ppm
F1        4001.30 MHz
F2        -46.13 Hz
PUNCH     0.44000 ppm/cm
MCH       118.05191 MHz/cm
  
```

7.22680
7.30898
7.32772
7.28153
7.28205
7.28270
7.28276
7.28282
7.28287
7.28292
7.28297
7.28302
7.28307
7.28312
7.28317
7.28322
7.28327
7.28332
7.28337
7.28342
7.28347
7.28352
7.28357
7.28362
7.28367
7.28372
7.28377
7.28382
7.28387
7.28392
7.28397
7.28402
7.28407
7.28412
7.28417
7.28422
7.28427
7.28432
7.28437
7.28442
7.28447
7.28452
7.28457
7.28462
7.28467
7.28472
7.28477
7.28482
7.28487
7.28492
7.28497
7.28502
7.28507
7.28512
7.28517
7.28522
7.28527
7.28532
7.28537
7.28542
7.28547
7.28552
7.28557
7.28562
7.28567
7.28572
7.28577
7.28582
7.28587
7.28592
7.28597
7.28602
7.28607
7.28612
7.28617
7.28622
7.28627
7.28632
7.28637
7.28642
7.28647
7.28652
7.28657
7.28662
7.28667
7.28672
7.28677
7.28682
7.28687
7.28692
7.28697
7.28702
7.28707
7.28712
7.28717
7.28722
7.28727
7.28732
7.28737
7.28742
7.28747
7.28752
7.28757
7.28762
7.28767
7.28772
7.28777
7.28782
7.28787
7.28792
7.28797
7.28802
7.28807
7.28812
7.28817
7.28822
7.28827
7.28832
7.28837
7.28842
7.28847
7.28852
7.28857
7.28862
7.28867
7.28872
7.28877
7.28882
7.28887
7.28892
7.28897
7.28902
7.28907
7.28912
7.28917
7.28922
7.28927
7.28932
7.28937
7.28942
7.28947
7.28952
7.28957
7.28962
7.28967
7.28972
7.28977
7.28982
7.28987
7.28992
7.28997
7.29002
7.29007
7.29012
7.29017
7.29022
7.29027
7.29032
7.29037
7.29042
7.29047
7.29052
7.29057
7.29062
7.29067
7.29072
7.29077
7.29082
7.29087
7.29092
7.29097
7.29102
7.29107
7.29112
7.29117
7.29122
7.29127
7.29132
7.29137
7.29142
7.29147
7.29152
7.29157
7.29162
7.29167
7.29172
7.29177
7.29182
7.29187
7.29192
7.29197
7.29202
7.29207
7.29212
7.29217
7.29222
7.29227
7.29232
7.29237
7.29242
7.29247
7.29252
7.29257
7.29262
7.29267
7.29272
7.29277
7.29282
7.29287
7.29292
7.29297
7.29302
7.29307
7.29312
7.29317
7.29322
7.29327
7.29332
7.29337
7.29342
7.29347
7.29352
7.29357
7.29362
7.29367
7.29372
7.29377
7.29382
7.29387
7.29392
7.29397
7.29402
7.29407
7.29412
7.29417
7.29422
7.29427
7.29432
7.29437
7.29442
7.29447
7.29452
7.29457
7.29462
7.29467
7.29472
7.29477
7.29482
7.29487
7.29492
7.29497
7.29502
7.29507
7.29512
7.29517
7.29522
7.29527
7.29532
7.29537
7.29542
7.29547
7.29552
7.29557
7.29562
7.29567
7.29572
7.29577
7.29582
7.29587
7.29592
7.29597
7.29602
7.29607
7.29612
7.29617
7.29622
7.29627
7.29632
7.29637
7.29642
7.29647
7.29652
7.29657
7.29662
7.29667
7.29672
7.29677
7.29682
7.29687
7.29692
7.29697
7.29702
7.29707
7.29712
7.29717
7.29722
7.29727
7.29732
7.29737
7.29742
7.29747
7.29752
7.29757
7.29762
7.29767
7.29772
7.29777
7.29782
7.29787
7.29792
7.29797
7.29802
7.29807
7.29812
7.29817
7.29822
7.29827
7.29832
7.29837
7.29842
7.29847
7.29852
7.29857
7.29862
7.29867
7.29872
7.29877
7.29882
7.29887
7.29892
7.29897
7.29902
7.29907
7.29912
7.29917
7.29922
7.29927
7.29932
7.29937
7.29942
7.29947
7.29952
7.29957
7.29962
7.29967
7.29972
7.29977
7.29982
7.29987
7.29992
7.29997
8.00000



```

Current Data Parameters
NAME      Exp018141P
EXPNO    180
PROCNO   3

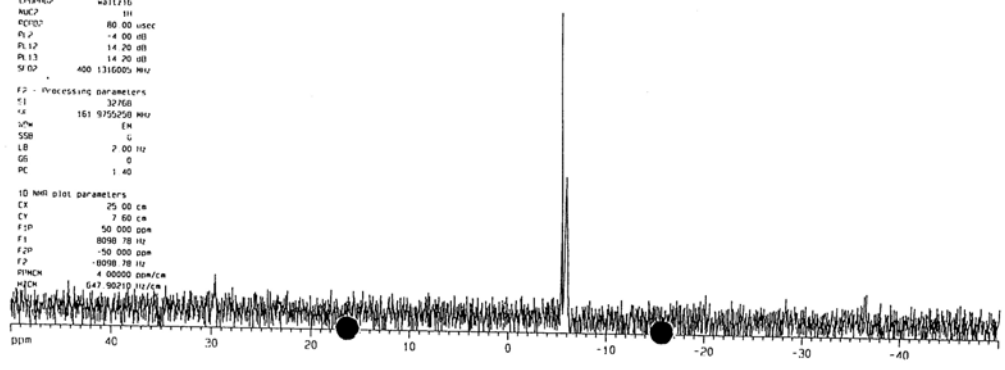
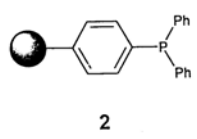
F2 - Acquisition Parameters
Date_    20021214
Time     11.25
INSTRUM  spect
PROBHD   5 mm QNP 1H/1
PULPROG  zgpg30
TD        32768
SOLVENT  CDCl3
NS        4
DS        4
SWH       64920.056 Hz
FIDRES   1.18161 Hz
AQ        0.2523636 sec
RG        4997.6
DE        7.100 usec
TE        6.00 usec
TL        300.0 K
D1        2.0000000 sec
d11       0.0300000 sec
d12       0.0000200 sec

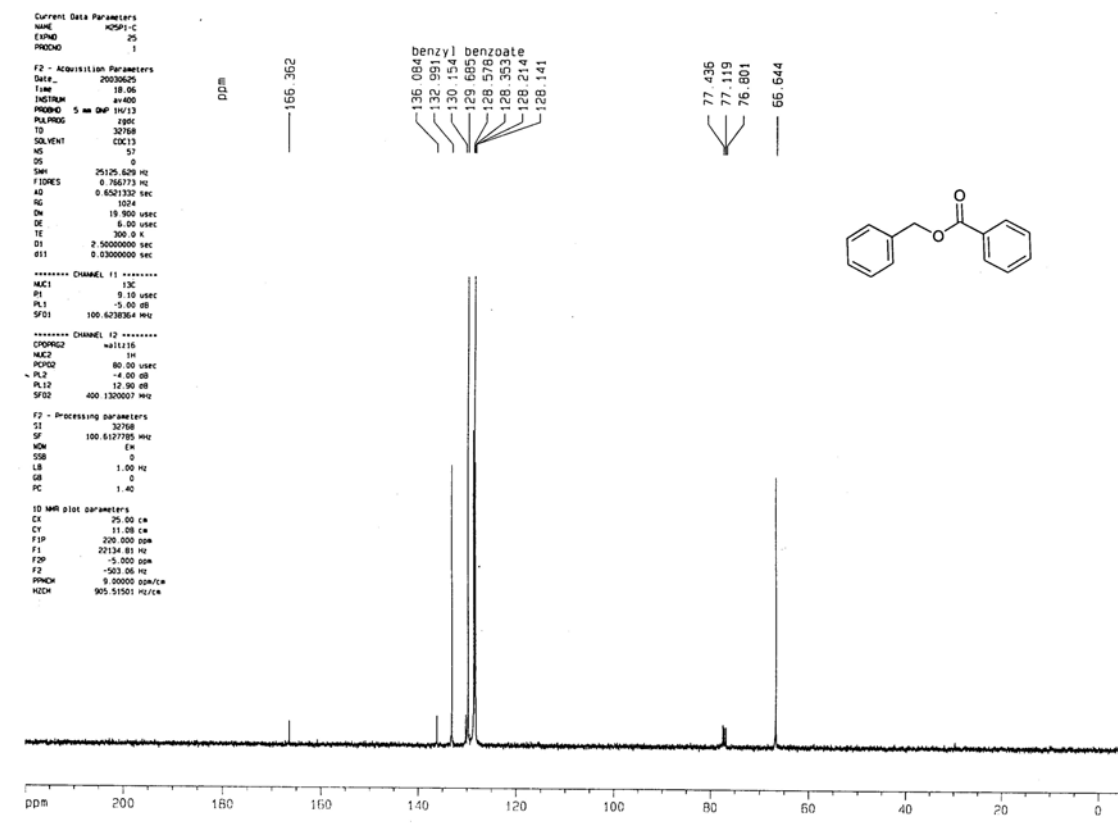
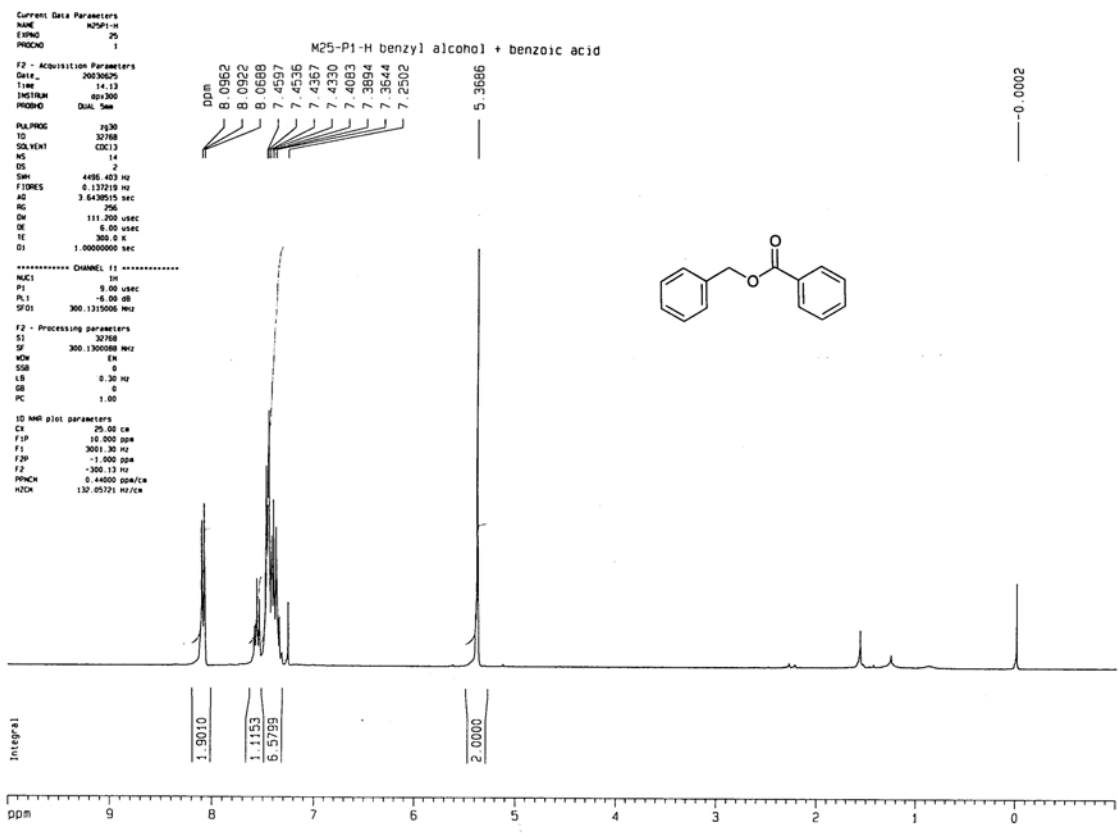
***** CHANNEL f1 *****
NUC1      31P
P1        4.90 usec
PL1       -5.00 dB
SFO1      161.9753930 MHz

***** CHANNEL f2 *****
CPDPRG2  waltz16
NUC2      1H
PCPD2    80.00 usec
PL12     -4.00 dB
PL13     14.20 dB
PL14     14.20 dB
SFO2     400.1316000 MHz

F2 - Processing parameters
SI        32768
SF        161.9753930 MHz
WDW       EM
SSB       0
LB        2.00 Hz
GB        0
PC        1.40

1D NMR plot parameters
CX        25.00 cm
CY        7.60 cm
FIDP      50.000 ppm
F1        8098.78 Hz
F2        -50.000 ppm
PUNCH     4.00000 ppm/cm
MCH       647.90210 Hz/cm
  
```





```

Current Data Parameters
NAME      M881-2
EXPNO    48
PROCNO   1

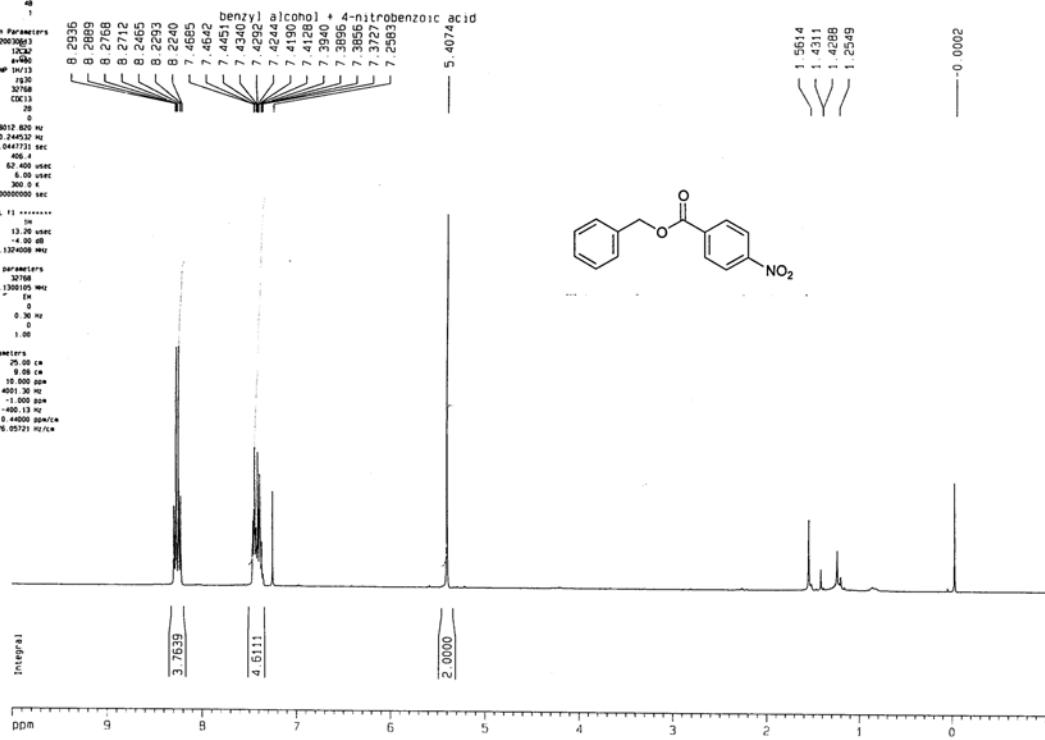
F2 - Acquisition Parameters
Date_     20030613
Time      12:32
INSTRUM   MARIAN
PROBHD    5 mm QNP
PULPROG   zgpg30
TD         32768
SOLVENT   CDCl3
NS         28
DS         0
SWH        8012.826 Hz
FIDRES    0.244532 Hz
AQ         2.0441731 sec
RG         400.4
DQ         62.400 usec
DE         8.00 usec
TE         300.0 K
D1         1.0000000 sec

***** CHANNEL f1 *****
NUC1       13C
P1         13.20 usec
PL1        -4.50 dB
SFO1      400.1324008 MHz

F2 - Processing parameters
SI         32768
SF         400.1324008 MHz
WDW        EM
SSB        0
LB         0.30 Hz
GB         0
PC         1.00

10 MHz plot parameters
CX         25.00 cm
CY         9.00 cm
FAP        15.000 ppm
F1         400.130 MHz
F2         -1.000 ppm
F3P        +60.13 Hz
PPHCK     0.44000 ppm/cx
HDCX     176.93721 Hz/cx

```



```

Current Data Parameters
NAME      M881-2
EXPNO    48
PROCNO   1

F2 - Acquisition Parameters
Date_     20030613
Time      18:15
INSTRUM   MARIAN
PROBHD    5 mm QNP
PULPROG   zgpg30
TD         32768
SOLVENT   CDCl3
NS         199
DS         0
SWH        25125.629 Hz
FIDRES    0.5521332 Hz
AQ         1824.6
DQ         18.900 usec
DE         8.00 usec
TE         300.0 K
D1         2.5000000 sec
d11       0.9300000 sec

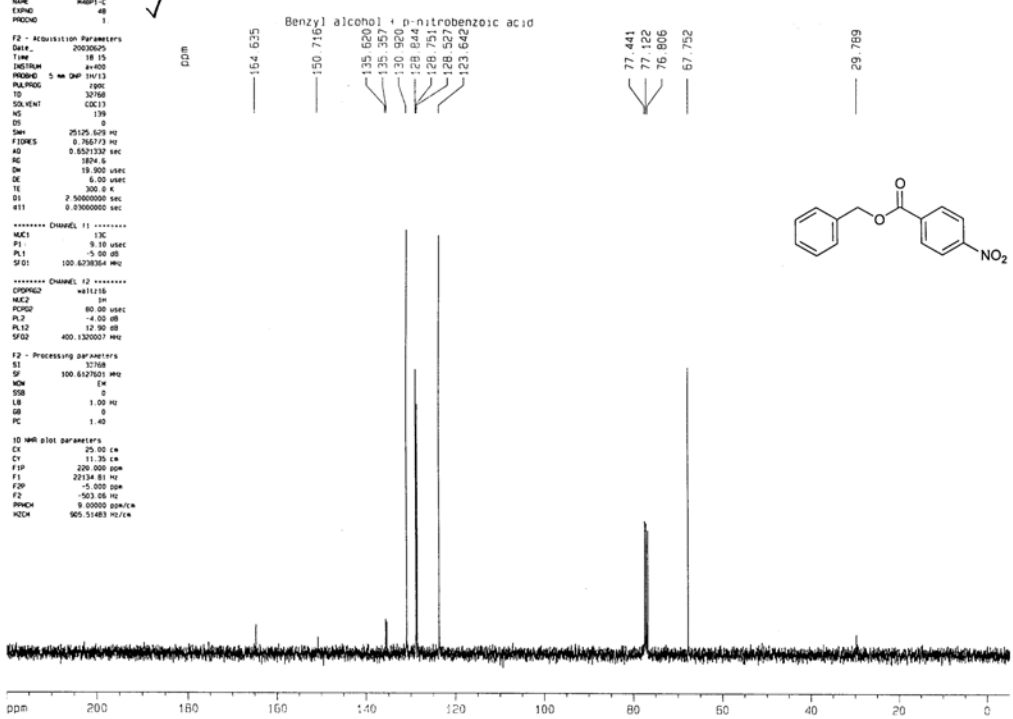
***** CHANNEL f1 *****
NUC1       13C
P1         9.10 usec
PL1        -5.30 dB
SFO1      100.6278364 MHz

***** CHANNEL f2 *****
CPROG2    waltz16
NUC2       1H
PCPD2     80.00 usec
PL2       -4.00 dB
PL12      12.50 dB
SFO2      400.1320037 MHz

F2 - Processing parameters
SI         32768
SF         100.6127921 MHz
WDW        EM
SSB        0
LB         1.00 Hz
GB         0
PC         1.40

10 MHz plot parameters
CX         25.00 cm
CY         11.30 cm
FAP        220.000 ppm
F1         251.3481 Hz
F2         -5.000 ppm
F3P        -503.00 Hz
PPHCK     9.00000 ppm/cx
HDCX     905.51483 Hz/cx

```



```

Current Data Parameters
NAME      HOP-1
EXPNO    25
PROCNO   3

F2 - Acquisition Parameters
Date_    20030702
Time     9.16
INSTRUM  s+400
PROBHD   5 mm QNP 1H/13
PULPROG  zgpg30
TD        32768
SOLVENT  CDCl3
NS        261
DS        0
SWH       25125.629 MHz
FIDRES    0.166773 Hz
AQ        0.621332 sec
RG         1629.5
DM         19.900 usec
DE         6.00 usec
TE        300.0 K
D1         2.5000000 sec
d11        0.0300000 sec

***** CHANNEL f1 *****
NUC1       13C
P1         9.10 usec
PL1        -1.00 dB
SFO1       100.628364 MHz

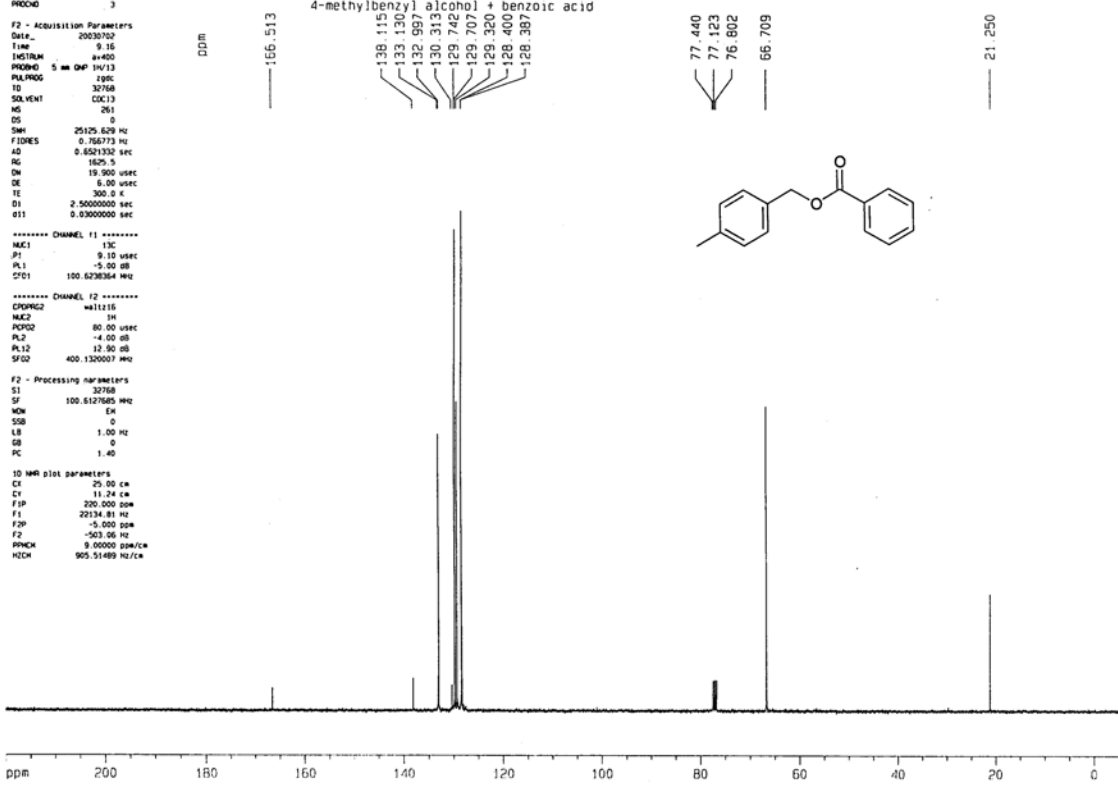
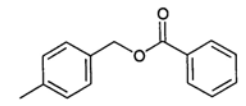
***** CHANNEL f2 *****
CPROG2    zgpg30
NUC2       1H
P2         80.00 usec
PL2        -1.00 dB
PL12       12.90 dB
SFO2       400.130007 MHz

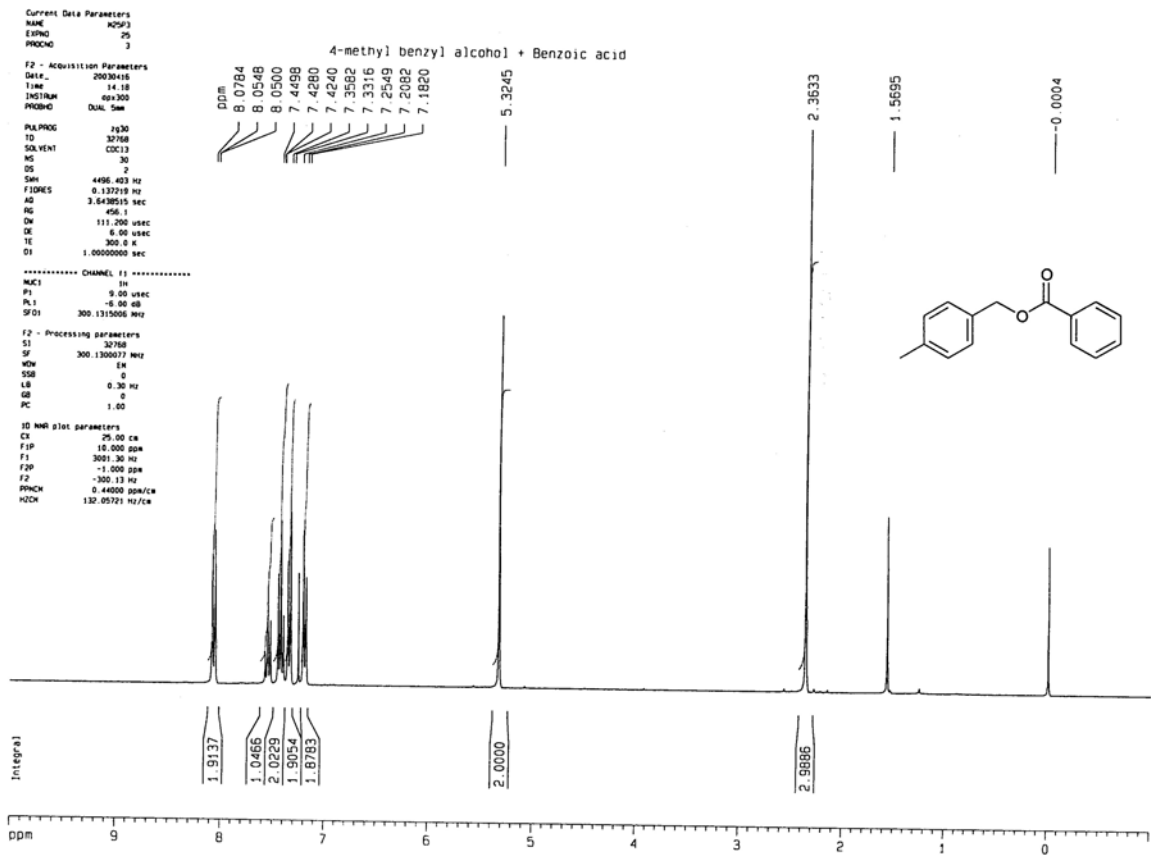
F2 - Processing parameters
SI         32768
SF         100.628365 MHz
WDW        EM
SSB        0
LB         1.00 MHz
GB         0
PC         1.40

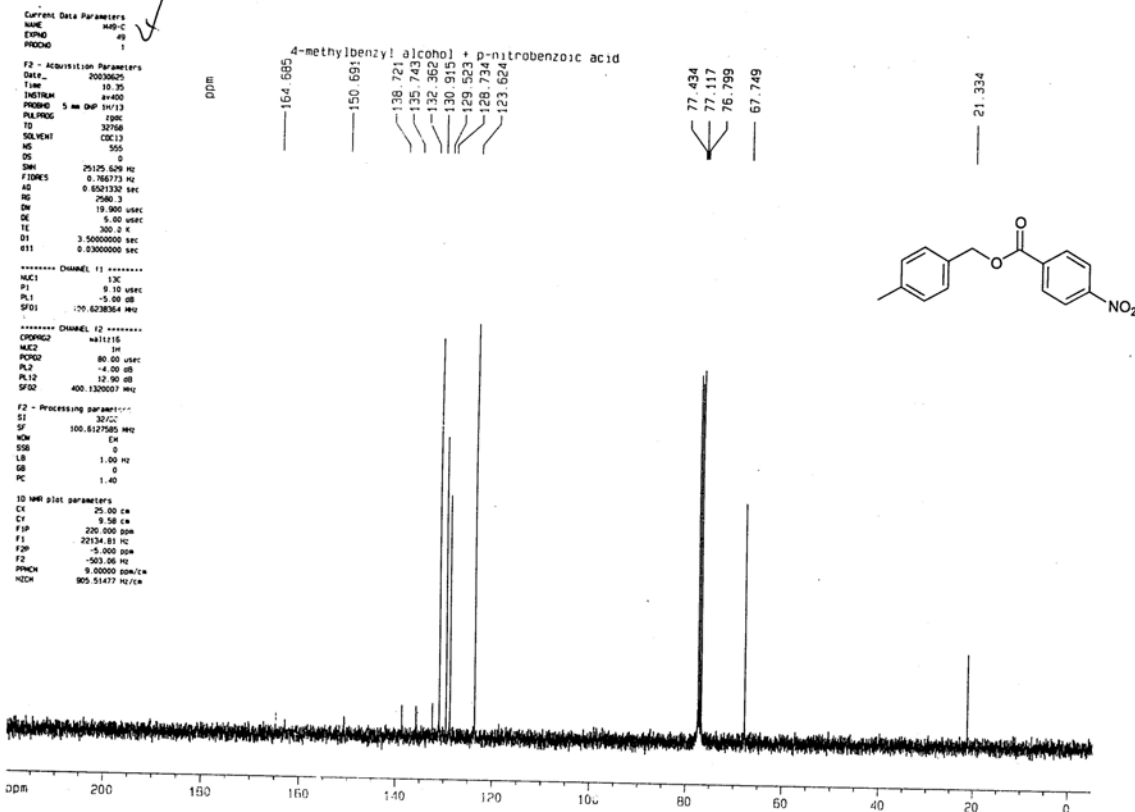
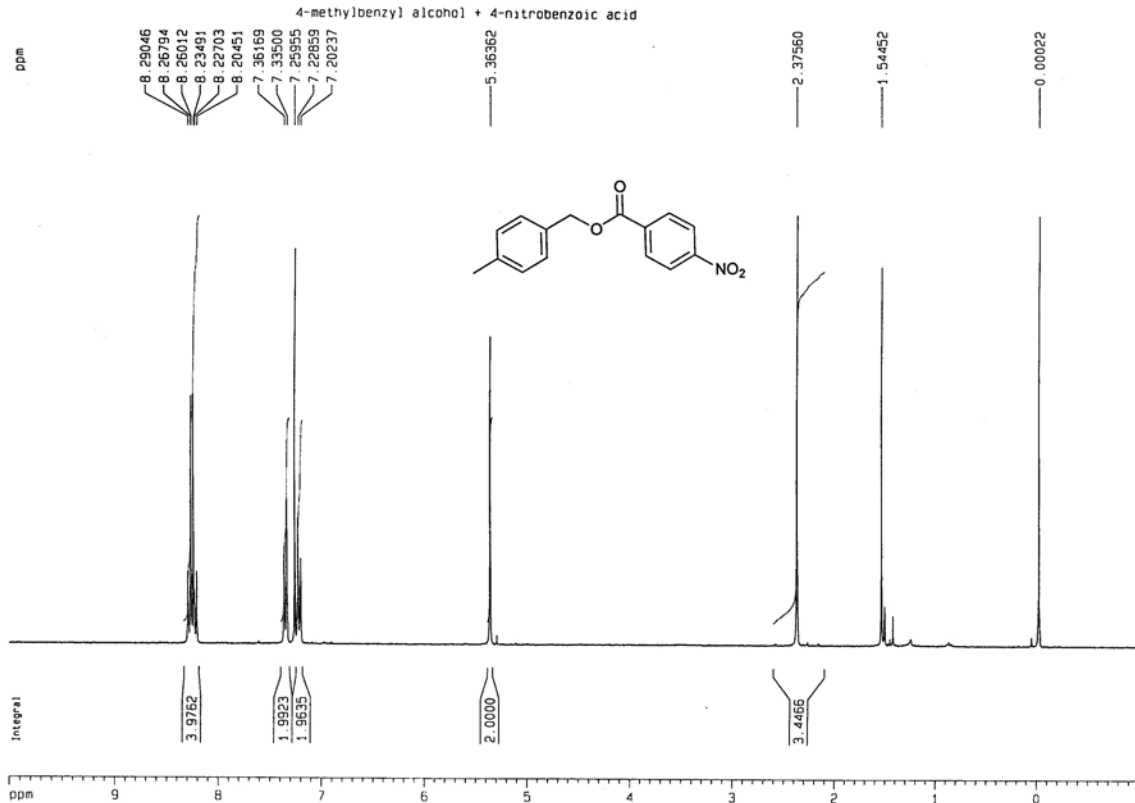
1D NMR plot parameters
EX         25.00 cm
CY         11.24 cm
FSP        230.000 ppm
F1         20134.81 MHz
F2P        -5.000 ppm
F2         -503.06 MHz
PRNCH      0.00000 ppm/cm
H2CH       905.51489 MHz/cm

```

4-methylbenzyl alcohol + benzoic acid







Current Data Parameters

NAME 49

EXPNO 1

PROCNO 1

F2 - Acquisition Parameters

DATE_ 20030605

TIME 10:30

INSTRUM av400

PROBHD 5 mm QNP 1H/13

PULPROG zgpg

TD 32768

SOLVENT CDCl3

NS 555

DS 0

SWH 25125.629 Hz

FIDRES 0.766773 Hz

AQ 0.600332 sec

RG 2560.3

DM 19.900 usec

DE 5.00 usec

TE 300.2 K

D1 3.5000000 sec

D11 0.3300000 sec

***** CHANNEL f1 *****

NUC1 13C

PI 9.10 usec

PL1 -5.00 dB

SFO1 100.6278054 MHz

***** CHANNEL f2 *****

CPDPRG2 waltz16

NUC2 1H

PCPD2 80.00 usec

PL2 -4.00 dB

PL12 12.00 dB

SFO2 400.1320017 MHz

F2 - Processing parameters

SF 100.627805 MHz

WDW EM

SSB 0

LB 1.00 Hz

GB 0

PC 1.40

1D NMR plot parameters

CI 25.00 cm

CT 5.56 cm

F1P 200.000 ppm

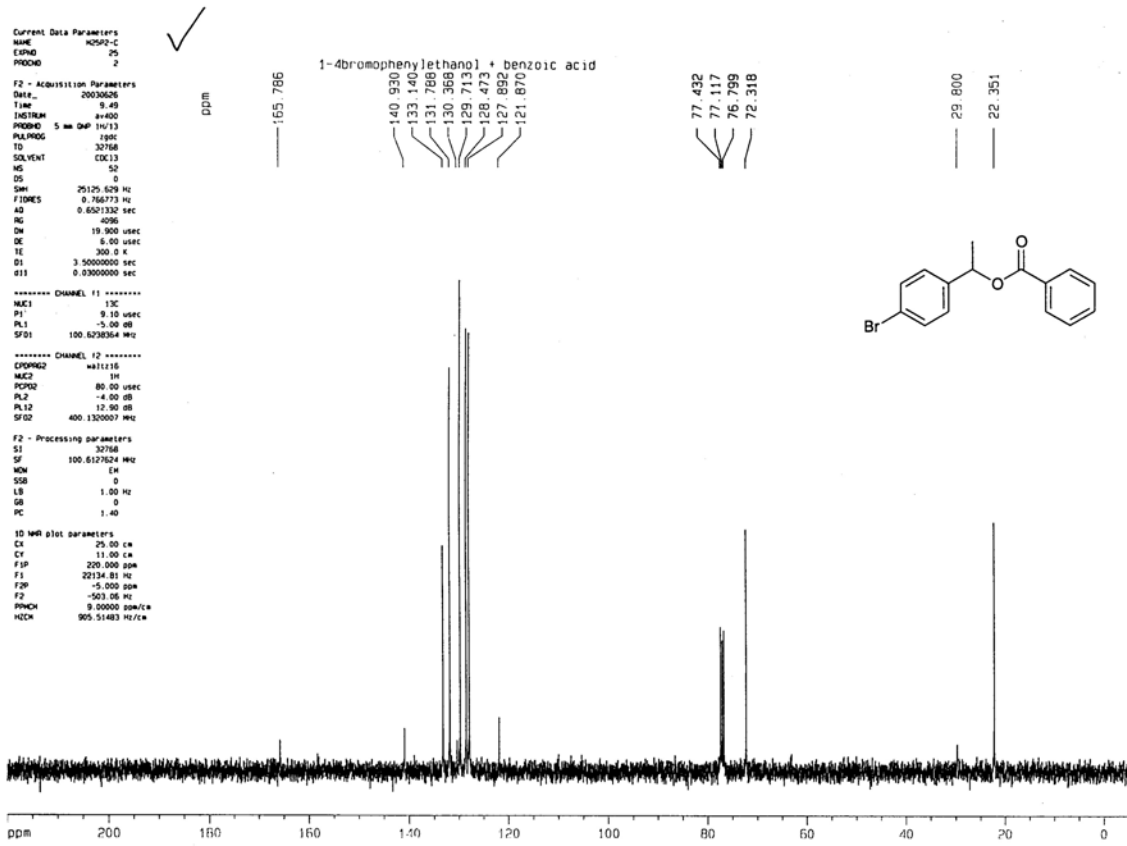
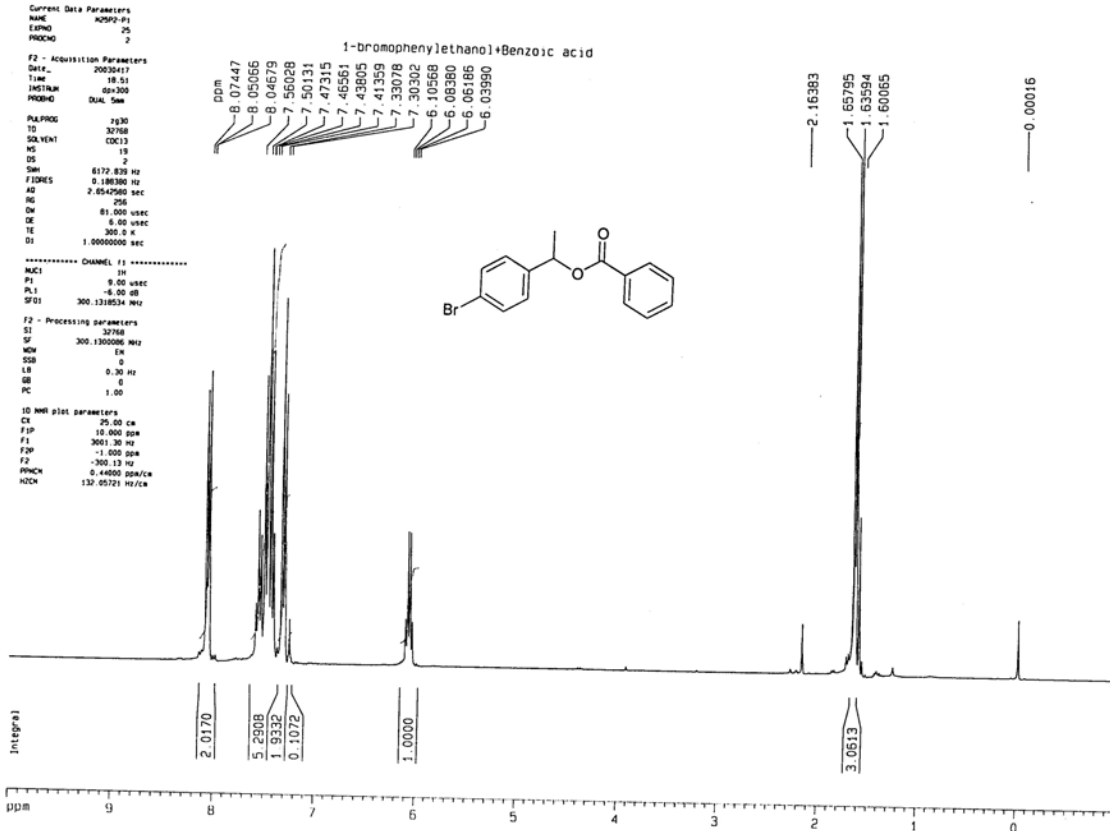
F1 22134.81 Hz

F2P -5.000 ppm

F2 -503.06 Hz

PRNCP 0.00000 ppm/cm

HNCH 805.51477 Hz/cm



```

Current Data Parameters
NAME: 40971
EXPNO: 59
PROCNO: 1
F2 - Acquisition Parameters
Date_: 20030205
Time: 15:52
INSTRUM: av400
PROBHD: 5 mm QNP 1H/13
PULPROG: zgpgc
TD: 32768
SOLVENT: CDCl3
NS: 619
DS: 0
SWH: 25125.629 Hz
FIDRES: 0.766773 Hz
AQ: 0.501330 sec
RG: 2048
AQ2: 19.900 usec
DE: 0.50 usec
TE: 300.2 K
D1: 2.5000000 sec
d11: 0.0300000 sec
***** CHANNEL f1 *****
NUC1: 13C
P1: 9.10 usec
PL1: -5.00 dB
SFO1: 100.6261200 MHz
***** CHANNEL f2 *****
CPDPRG2: waltz16
NUC2: 1H
P2: 80.00 usec
PL2: -4.00 dB
SFO2: 400.1320007 MHz
F2 - Processing parameters
SI: 32768
SF: 100.6127965 MHz
WDW: EM
SSB: 0
LB: 1.00 Hz
GB: 0
PC: 1.40
1D MR plot parameters
CX: 70.00 cm
CY: 10.43 cm
FIP: 200.000 ppm
F1: 22134.81 Hz
F2: -5.000 ppm
Z: -503.00 Hz
PWHX: 9.00000 ppm/cm
HZCX: 905.51477 Hz/cm

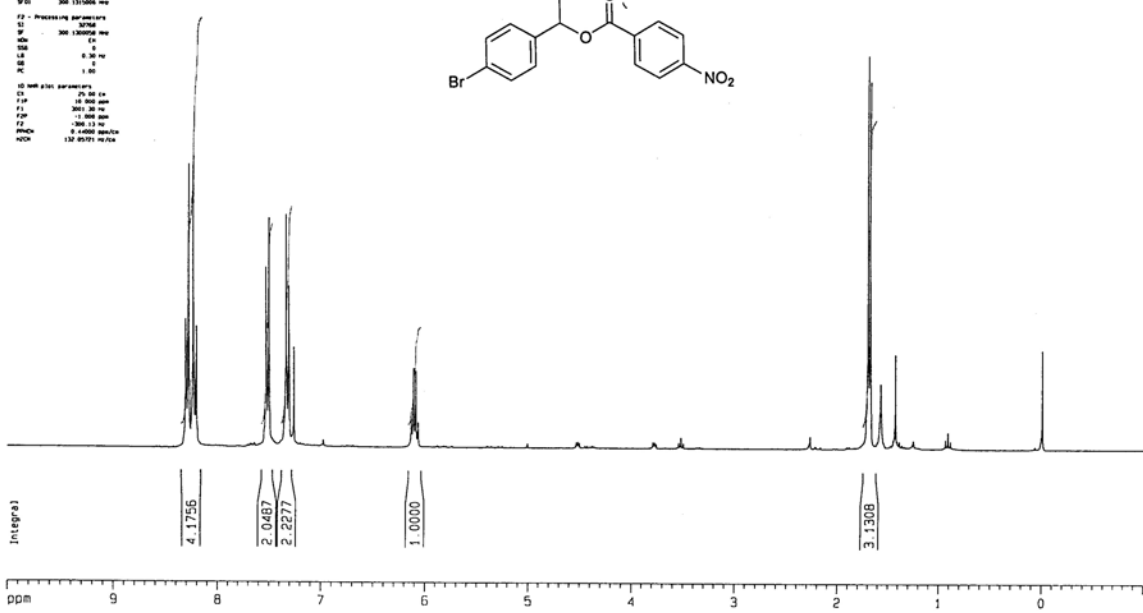
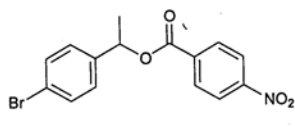
```

ppm

8.3026
8.2796
8.2728
8.2288
8.2215
8.1990
7.5275
7.5054
7.4593
7.3351
7.3290
7.3125
7.3070
7.2605
6.1323
6.1103
6.0884
6.0664

1.6999
1.6779
1.5796
1.4316

0.0001



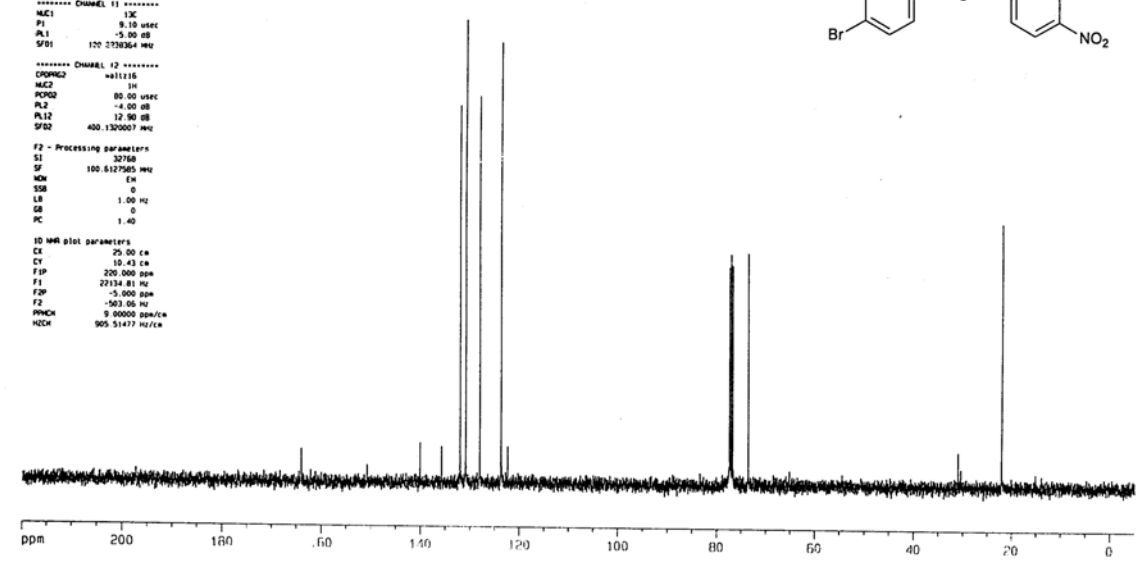
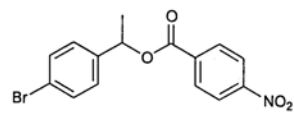
```

Current Data Parameters
NAME: 40971
EXPNO: 59
PROCNO: 2
F2 - Acquisition Parameters
Date_: 20030205
Time: 16:52
INSTRUM: av400
PROBHD: 5 mm QNP 1H/13
PULPROG: zgpgc
TD: 32768
SOLVENT: CDCl3
NS: 619
DS: 0
SWH: 25125.629 Hz
FIDRES: 0.766773 Hz
AQ: 0.501330 sec
RG: 2048
AQ2: 19.900 usec
DE: 0.50 usec
TE: 300.2 K
D1: 2.5000000 sec
d11: 0.0300000 sec
***** CHANNEL f1 *****
NUC1: 13C
P1: 9.10 usec
PL1: -5.00 dB
SFO1: 100.6261200 MHz
***** CHANNEL f2 *****
CPDPRG2: waltz16
NUC2: 1H
P2: 80.00 usec
PL2: -4.00 dB
SFO2: 400.1320007 MHz
F2 - Processing parameters
SI: 32768
SF: 100.6127965 MHz
WDW: EM
SSB: 0
LB: 1.00 Hz
GB: 0
PC: 1.40
1D MR plot parameters
CX: 70.00 cm
CY: 10.43 cm
FIP: 200.000 ppm
F1: 22134.81 Hz
F2: -5.000 ppm
Z: -503.00 Hz
PWHX: 9.00000 ppm/cm
HZCX: 905.51477 Hz/cm

```

ppm

163.955
150.735
140.095
135.742
131.682
130.848
127.998
123.668
122.350
77.439
77.121
76.805
73.613
31.004
30.432
22.142



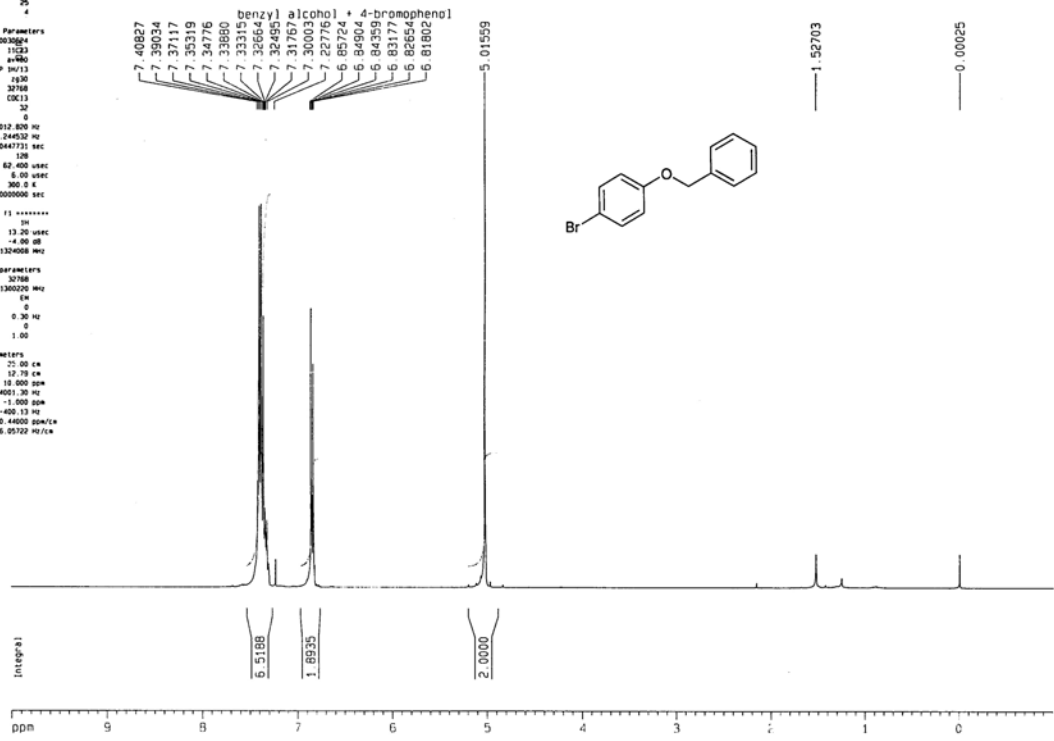
Current Data Parameters
 NAME H2SP4-C
 EXPNO 25
 PROCNO 4

F2 - Acquisition Parameters
 Date_ 20030624
 Time 11:29
 INSTRUM spect
 PROBO 5 mm DPB 1H/13
 PULPROG zgpg30
 TD 32768
 SOLVENT CDCl3
 NS 130
 DS 0
 SMI 8013.800 Hz
 FIDRES 0.244532 Hz
 AQ 2.0447731 sec
 RG 128
 DW 62.400 usec
 DE 0.00 usec
 TE 300.2 K
 D1 1.0000000 sec

***** CHANNEL f1 *****
 NUC1 13C
 P1 13.20 usec
 PL1 -4.00 dB
 SFO1 400.1326030 MHz

F2 - Processing parameters
 SI 32768
 SF 400.1300200 MHz
 NH 64
 SSB 0
 LB 0.0 Hz
 GB 0
 PC 1.00

ID MR list parameters
 CX 25.00 cm
 CY 12.79 cm
 F1 10.500 ppm
 F2 4001.30 Hz
 F3 -1.500 ppm
 F4 400.13 Hz
 PPMCK 0.44000 ppm/cm
 RDCX 178.05702 Hz/cm



Current Data Parameters
 NAME H2SP4-C ✓
 EXPNO 25
 PROCNO 4

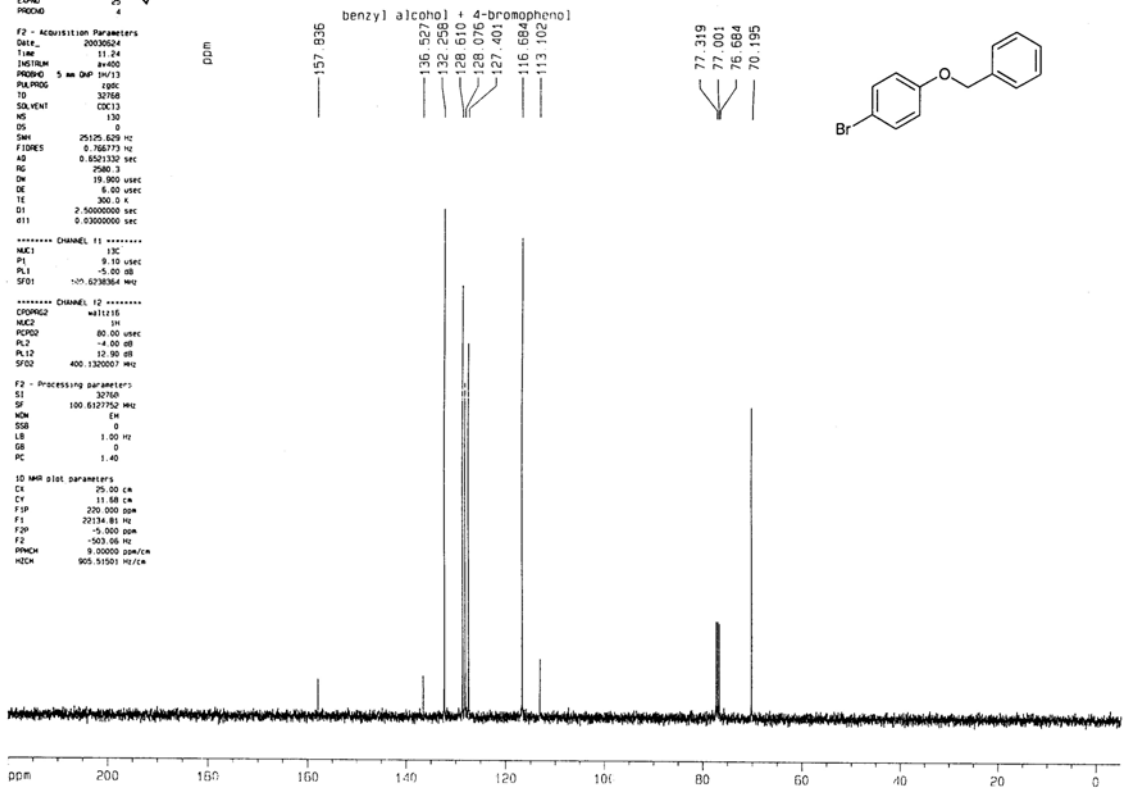
F2 - Acquisition Parameters
 Date_ 20030624
 Time 11:24
 INSTRUM spect
 PROBO 5 mm DPB 1H/13
 PULPROG zgpg30
 TD 32768
 SOLVENT CDCl3
 NS 130
 DS 0
 SMI 25125.629 Hz
 FIDRES 0.766773 Hz
 AQ 0.801132 sec
 RG 2580.3
 DW 19.900 usec
 DE 6.00 usec
 TE 300.2 K
 D1 2.5000000 sec
 D11 0.0300000 sec

***** CHANNEL f1 *****
 NUC1 13C
 P1 9.10 usec
 PL1 -5.00 dB
 SFO1 101.6238364 MHz

***** CHANNEL f2 *****
 CPDPRG2 waltz16
 NUC2 1H
 P2 80.00 usec
 PL2 -4.00 dB
 PL12 12.30 dB
 SFO2 400.1326030 MHz

F2 - Processing parameters
 SI 32768
 SF 100.6127750 MHz
 NH 64
 SSB 0
 LB 1.00 Hz
 GB 0
 PC 1.40

ID MR list parameters
 CX 25.00 cm
 CY 11.68 cm
 F1 200.500 ppm
 F2 20134.81 Hz
 F3 -5.000 ppm
 F4 100.61 Hz
 PPMCK 9.30000 ppm/cm
 RDCX 905.51901 Hz/cm



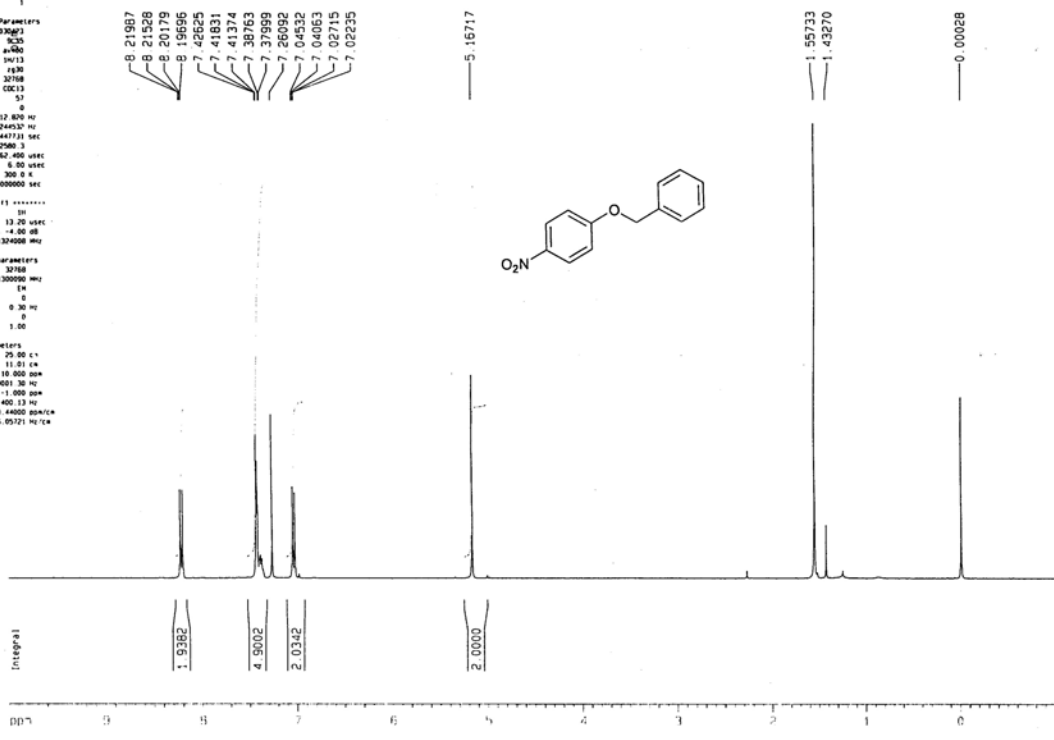
Current Data Parameters
 NAME H2095
 EXPNO 25
 PROCNO 1

2 - Acquisition Parameters
 Date_ 20030629
 Time 10.42
 INSTRUM spect
 PROBO 5 mm QNP 1H/13
 PULPROG zgpg30
 ID 32768
 SOLVENT CDCl3
 NS 588
 DS 8
 SWH 8012.820 Hz
 FIDRES 0.244513 Hz
 AQ 2.544773 sec
 RG 2560.3
 DW 62.400 usec
 DE 6.80 usec
 TE 300.2 K
 D1 1.80000000 sec
 F1 1.80000000 sec

***** CHANNEL f1 *****
 NUC1 13C
 P1 13.20 usec
 PL1 -4.00 dB
 SFO1 400.1324008 MHz

2 - Processing parameters
 SI 32768
 SF 400.1300090 MHz
 WHW 64
 SSB 0
 LB 0.30 Hz
 GB 0
 PC 1.00

ID NMR plot parameters
 CX 25.00 cm
 CY 11.01 cm
 FXP 10.000 ppm
 F1 4001.30 Hz
 F2 -1.000 ppm
 F3 -400.13 Hz
 PPMCH 0.4000 ppm/cm
 XDCM 176.05121 Hz/cm



Current Data Parameters
 NAME H2095-C
 EXPNO 25
 PROCNO 5

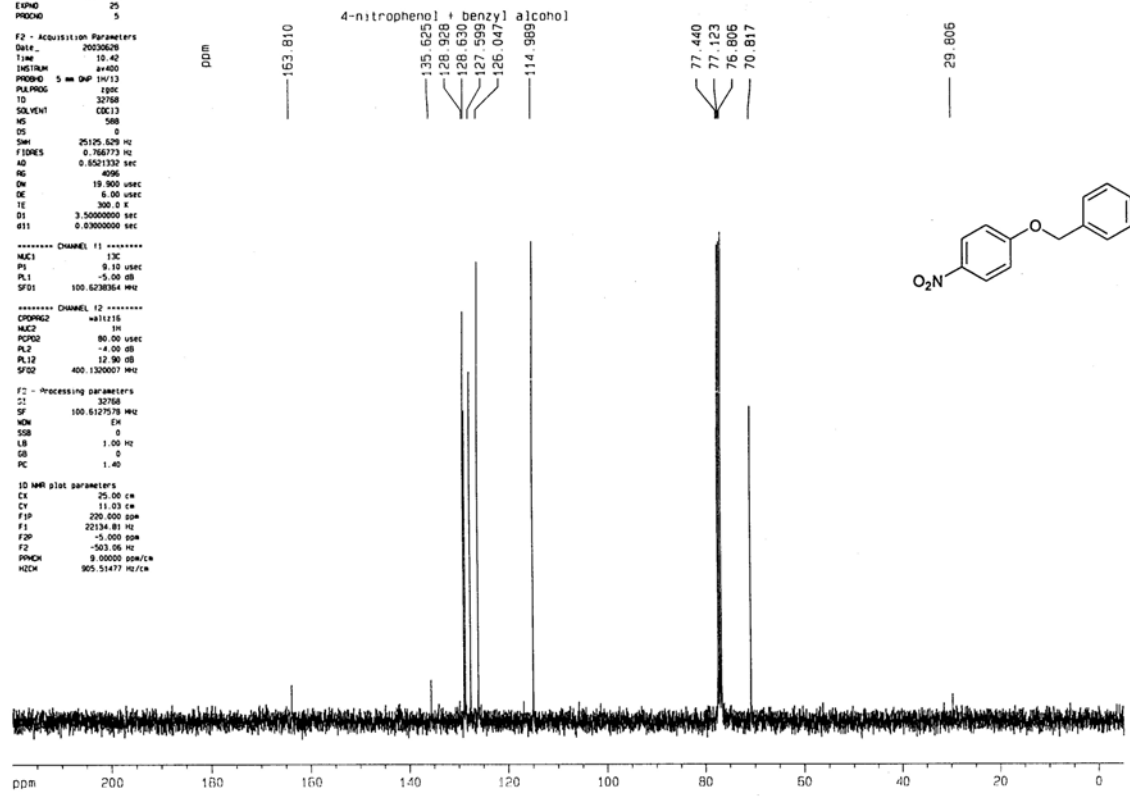
F2 - Acquisition Parameters
 Date_ 20030629
 Time 10.42
 INSTRUM spect
 PROBO 5 mm QNP 1H/13
 PULPROG zgpg30
 ID 32768
 SOLVENT CDCl3
 NS 588
 DS 8
 SWH 25125.629 Hz
 FIDRES 0.766773 Hz
 AQ 0.852132 sec
 RG 4096
 DW 19.900 usec
 DE 6.80 usec
 TE 300.2 K
 D1 3.50000000 sec
 g11 0.03000000 sec

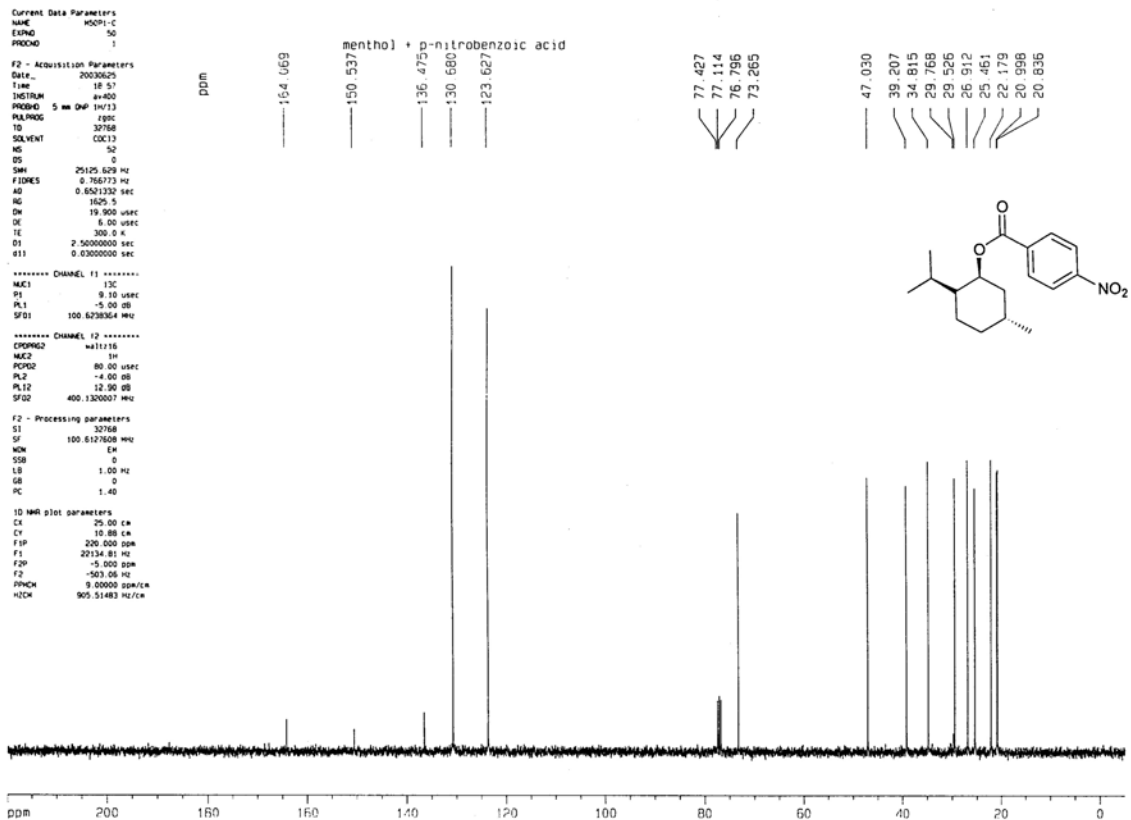
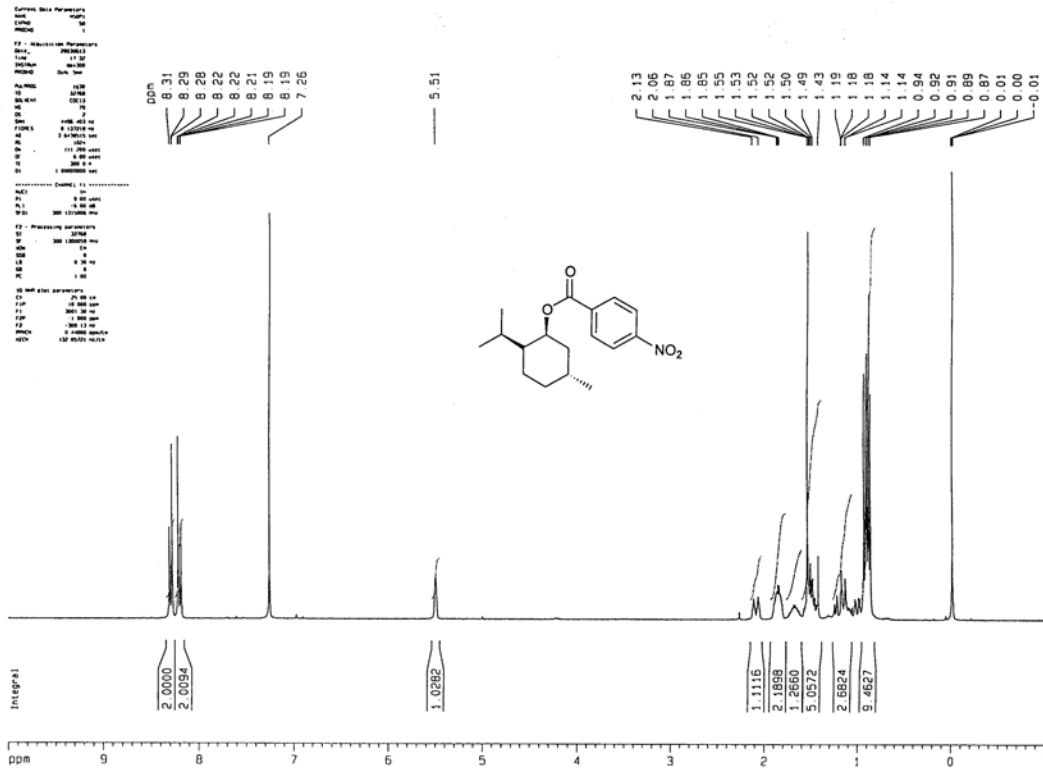
***** CHANNEL f1 *****
 NUC1 13C
 P1 9.10 usec
 PL1 -5.00 dB
 SFO1 100.6280364 MHz

***** CHANNEL f2 *****
 CPDPRG2 waltz16
 NUC2 1H
 PULPROG 80.00 usec
 PL2 -4.00 dB
 PL12 12.90 dB
 SFO2 400.1320003 MHz

F2 - Processing parameters
 SI 32768
 SF 100.6127578 MHz
 WHW 64
 SSB 0
 LB 1.00 Hz
 GB 0
 PC 1.40

ID NMR plot parameters
 CX 25.00 cm
 CY 11.01 cm
 FXP 200.000 ppm
 F1 22134.81 Hz
 F2 -5.000 ppm
 F3 -503.00 Hz
 PPMCH 9.00000 ppm/cm
 XDCM 905.51477 Hz/cm





```

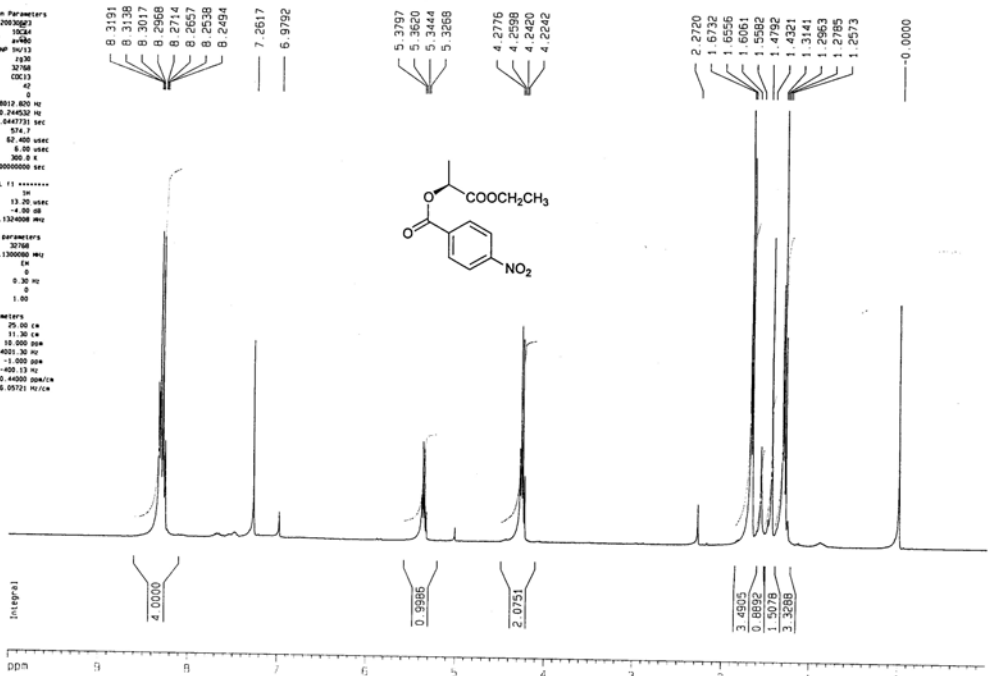
Current Data Parameters
NAME          HD199
EXPNO        2
PROCNO       2

F2 - Acquisition Parameters
Date_        20030213
Time         10:24
INSTRUM      spect
PROBHD       5 mm DNP 1H/13
PULPROG      zgpg30
TD           32768
SOLVENT      CDCl3
NS           4096
DS           4
SWH          8013.826 Hz
FIDRES       0.244532 Hz
AQ           2.644773 sec
RG           514.7
DM           62.400 usec
DE           8.00 usec
TE           300.2 K
D1           1.0000000 sec

***** CHANNEL f1 *****
NUC1          13C
P1            9.10 usec
PL1          -4.00 dB
SFO1         400.1324000 MHz

F2 - Processing parameters
SI           32768
SF           400.1300000 MHz
WDW          EM
SSB          0
LB           0.30 Hz
GB           0
PC           1.00

ID WALTZ16 parameters
CX           25.00 usec
CY           11.30 usec
F1P          161.900000 MHz
F1           400.130000 MHz
F2P          -11.000000 MHz
F2           -400.130000 MHz
PHWCH        0.44000000 MHz/cycle
H2CHK        178.007010 MHz/cycle
  
```



```

Current Data Parameters
NAME          HD199-C
EXPNO        25
PROCNO       5

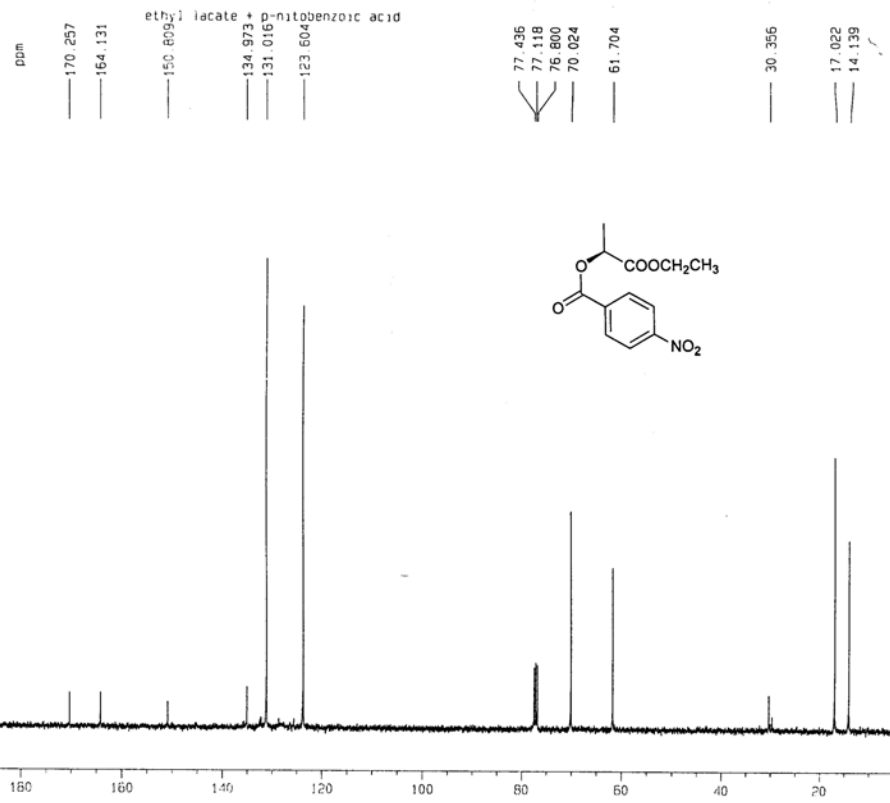
F2 - Acquisition Parameters
Date_        20030226
Time         15:45
INSTRUM      spect
PROBHD       5 mm DNP 1H/13
PULPROG      zgpg30
TD           32768
SOLVENT      CDCl3
NS           4096
DS           4
SWH          25126.628 Hz
FIDRES       0.786773 Hz
AQ           0.6521332 sec
RG           4096
DM           19.900 usec
DE           6.00 usec
TE           300.2 K
D1           3.5000000 sec
d11          0.03000000 sec

***** CHANNEL f1 *****
NUC1          13C
P1            9.10 usec
PL1          -5.00 dB
SFO1         100.6283664 MHz

***** CHANNEL f2 *****
CPDPRG2      waltz16
NUC2          1H
PCPD2        80.00 usec
PL2          -4.00 dB
PL12         13.00 dB
SFO2         400.1320007 MHz

F2 - Processing parameters
SI           32768
SF           100.6127632 MHz
WDW          EM
SSB          0
LB           1.00 Hz
GB           0
PC           1.40

ID WALTZ16 parameters
CX           25.00 usec
CY           10.40 usec
F1P          200.000000 MHz
F1           201.348100 MHz
F2P          -5.000000 MHz
F2           -503.060000 MHz
PHWCH        9.00000000 MHz/cycle
H2CHK        965.514893 MHz/cycle
  
```





Current Data Parameters
NAME ben-Br-1
EXPNO 1
PROCNO 1

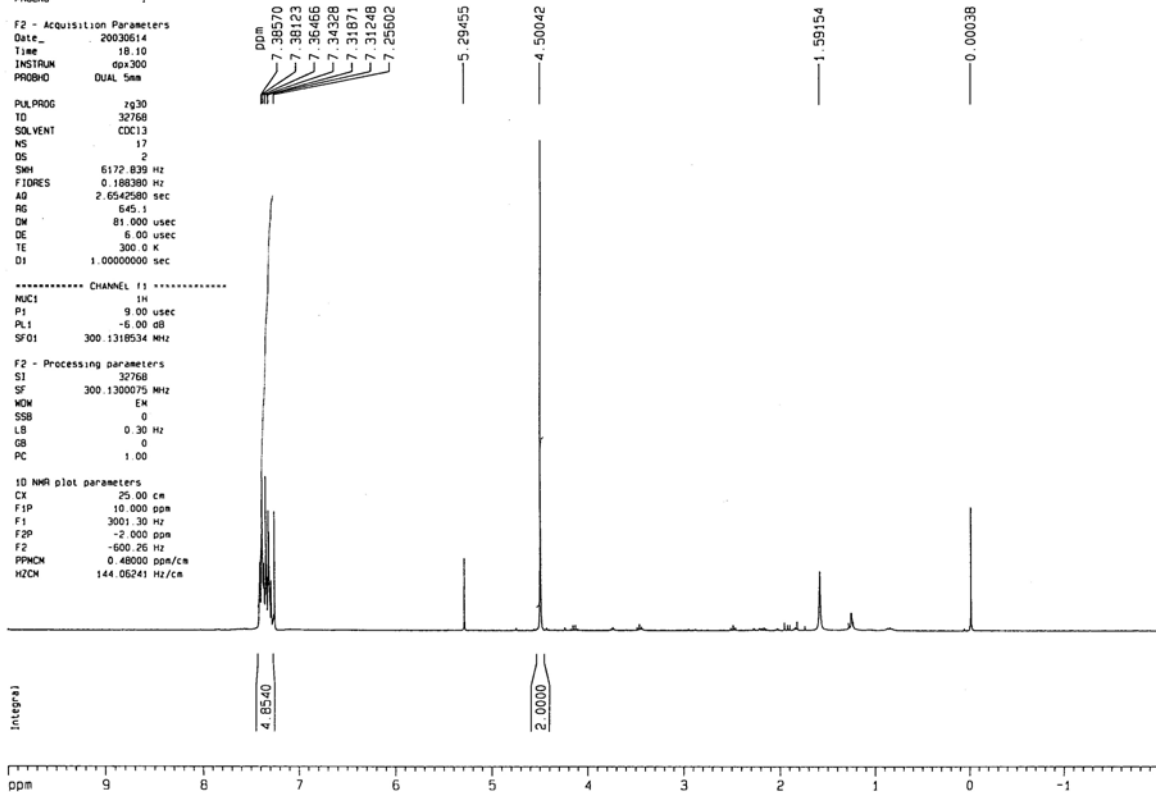
F2 - Acquisition Parameters
Date_ 20030614
Time 18.10
INSTRUM 60x300
PROBHD DUAL 5mm

PULPROG zg30
TD 32768
SOLVENT CDCl3
NS 17
DS 2
SMN 6172.839 Hz
FIDRES 0.188390 Hz
AQ 2.6542580 sec
RG 645.1
DM 81.900 usec
DE 6.00 usec
TE 300.0 K
D1 1.00000000 sec

----- CHANNEL f1 -----
NUC1 1H
P1 9.00 usec
PL1 -6.00 dB
SFO1 300.1318534 MHz

F2 - Processing parameters
SI 32768
SF 300.1300075 MHz
WDW EM
SSB 0
LB 0.30 Hz
GB 0
PC 1.00

1D NMR plot parameters
CX 25.00 cm
F1P 10.000 ppm
F1 3001.30 Hz
F2P -2.000 ppm
F2 -600.26 Hz
PPHCH 0.48000 ppm/cm
HZCH 144.06241 Hz/cm





Current Data Parameters
 NAME Ph-Eth-Br-2
 EXPNO 1
 PROCNO 1

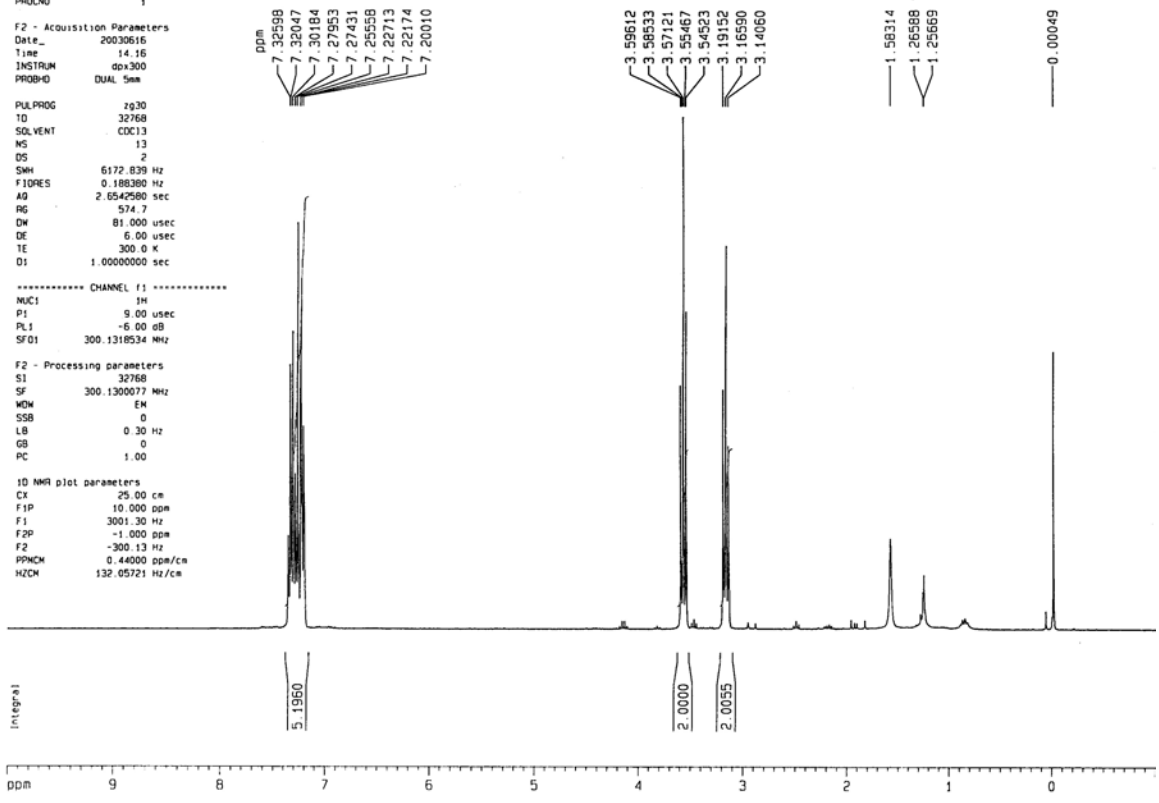
F2 - Acquisition Parameters
 Date_ 20030616
 Time 14.16
 INSTRUM gpc300
 PROBHD DUAL 5mm

PULPROG zg30
 TD 32768
 SOLVENT CDCl3
 NS 13
 DS 2
 SWH 6172.839 Hz
 FIDRES 0.188380 Hz
 AQ 2.6542960 sec
 RG 574.7
 DW 81.000 usec
 DE 6.00 usec
 TE 300.0 K
 D1 1.0000000 sec

***** CHANNEL f1 *****
 NUC1 1H
 P1 9.00 usec
 PL1 -6.00 dB
 SFO1 300.1318534 MHz

F2 - Processing parameters
 S1 32768
 SF 300.1300077 MHz
 WHW EK
 SSB 0
 LB 0.30 Hz
 GB 0
 PC 1.00

1D NMR plot parameters
 CX 25.00 cm
 F1P 10.000 ppm
 F1 3001.30 Hz
 F2P -1.000 ppm
 F2 -300.13 Hz
 PPHCM 0.44000 ppm/cm
 HZCM 132.05721 Hz/cm





Current Data Parameters
NAME meben-Br-1
EXNO 1
PROCNO 1

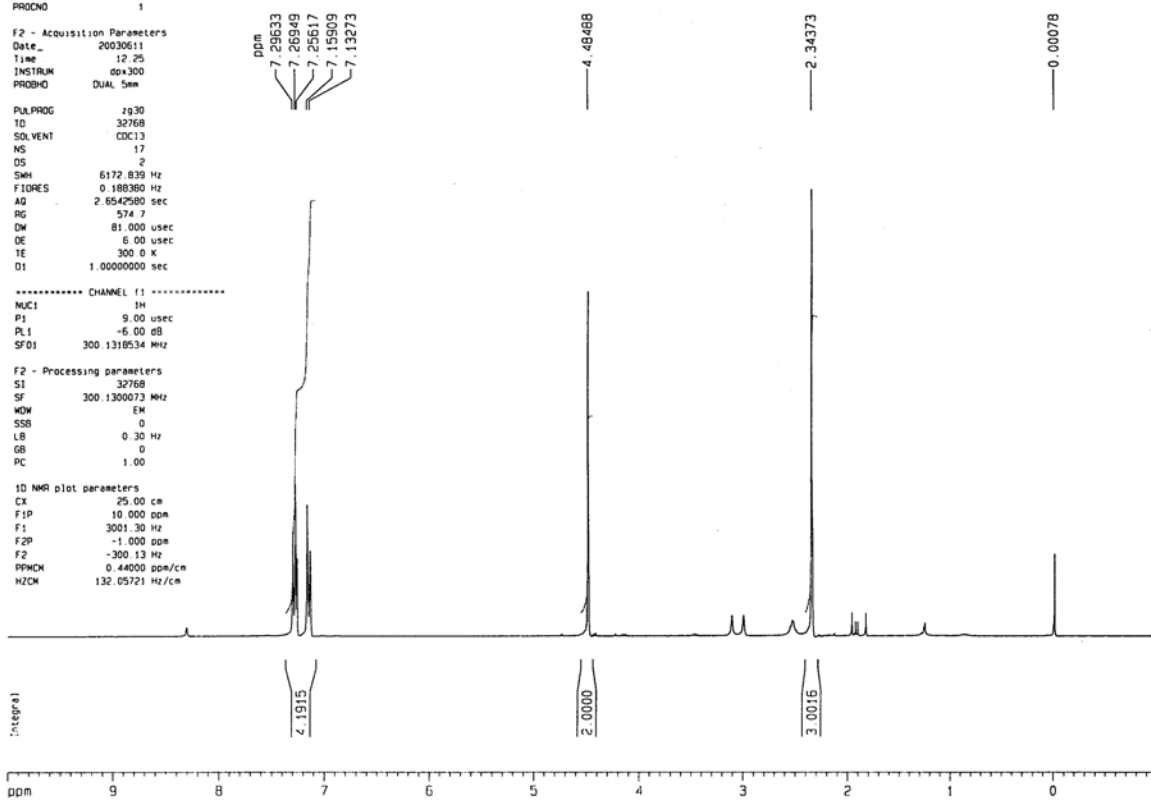
F2 - Acquisition Parameters
Date_ 20030611
Time 12.25
INSTRUM dp300
PROBHD DUAL 5mm

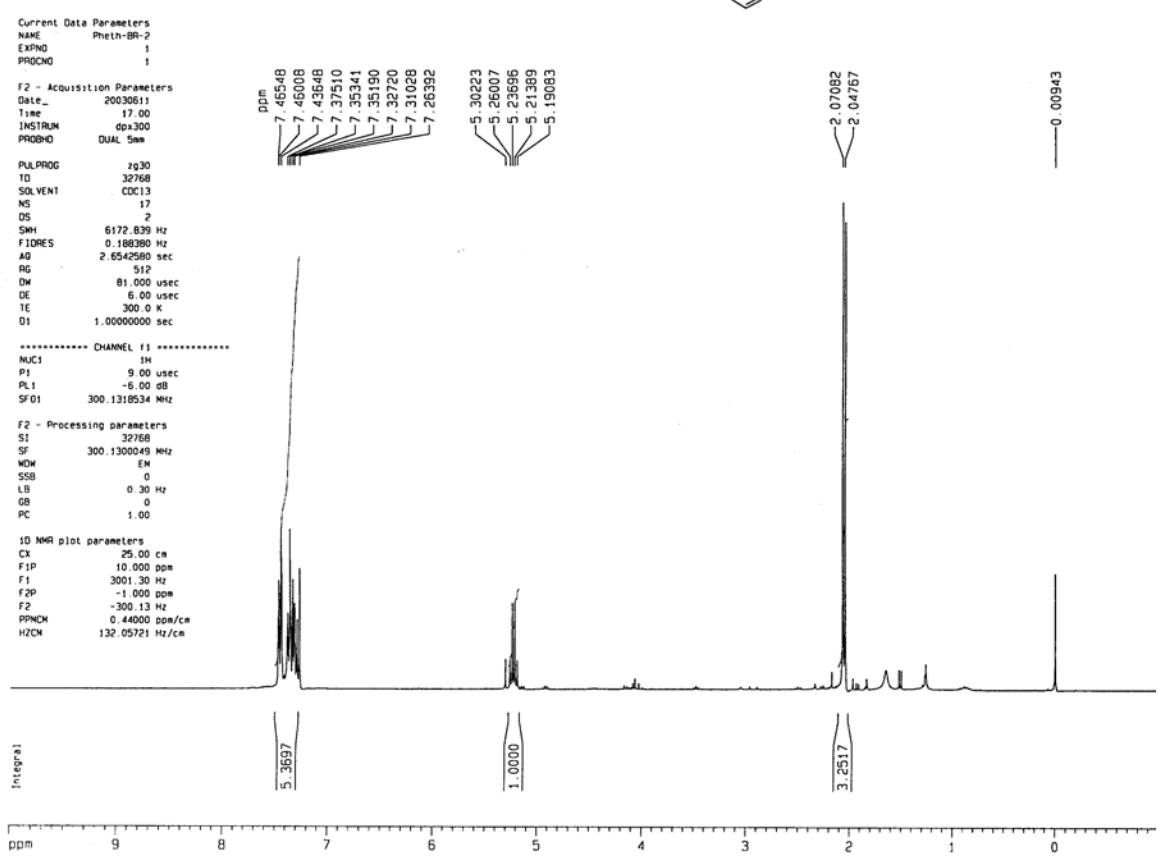
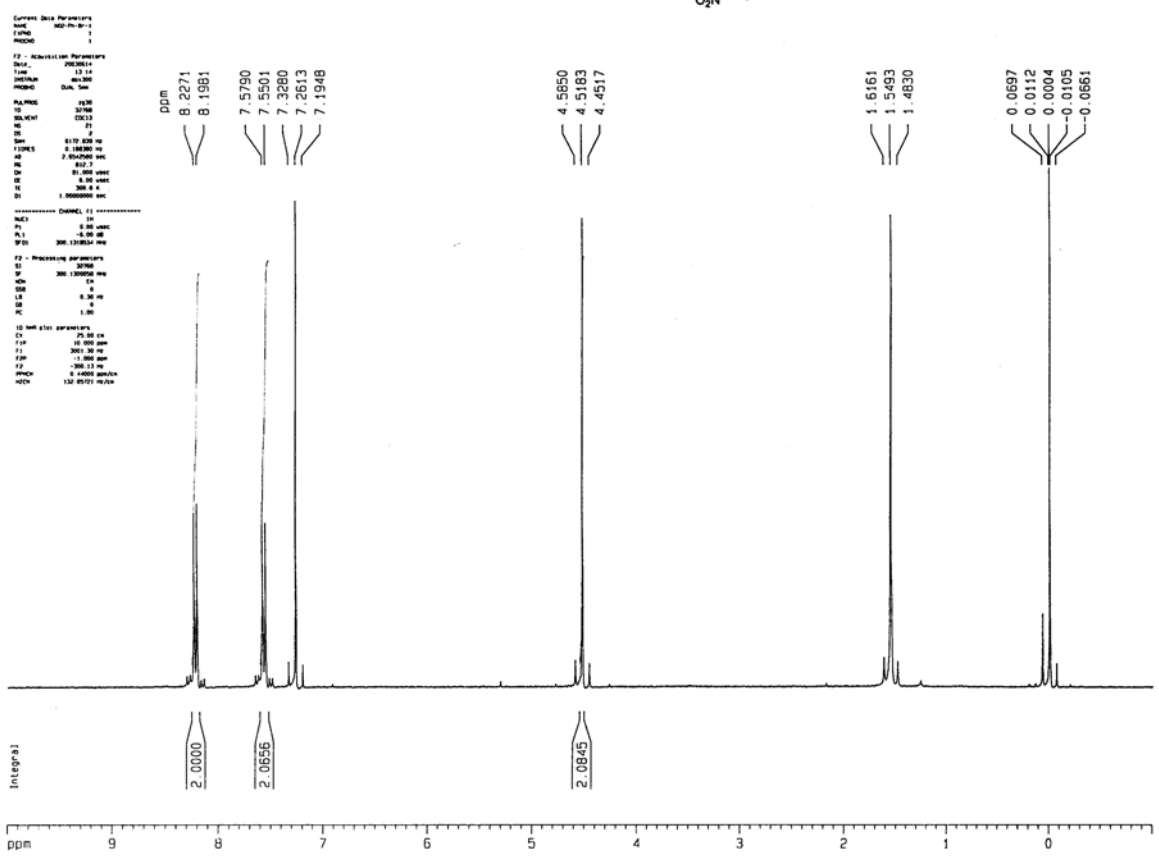
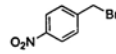
PULPROG zg30
TD 32768
SOLVENT CDCl3
NS 17
DS 2
SWH 6172.839 Hz
FIDRES 0.188380 Hz
AQ 2.6542580 sec
RG 574.7
DM 81.000 usec
DE 6.00 usec
TE 300.0 K
D1 1.00000000 sec

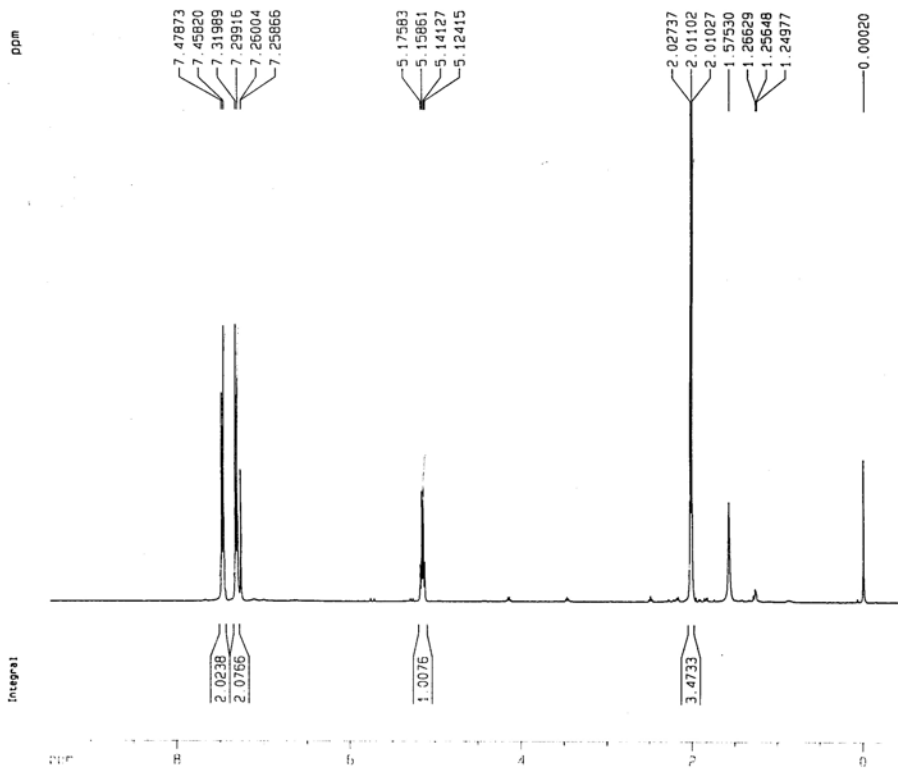
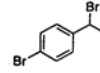
----- CHANNEL f1 -----
NUC1 1H
P1 9.00 usec
PL1 -6.00 dB
SFO1 300.1318534 MHz

F2 - Processing parameters
SI 32768
SF 300.1300073 MHz
WDW EM
SSB 0
LB 0.30 Hz
GB 0
PC 1.00

1D NMR plot parameters
CX 25.00 cm
F1P 10.000 ppm
F1 3001.30 Hz
F2P -1.000 ppm
F2 -300.13 Hz
PPMCH 0.44000 ppm/cm
HZCM 132.05721 Hz/cm







Current Data Parameters
 NAME Br-Ph-Br-1
 EXPNO 1
 PROCNO 1

F2 - Acquisition Parameters
 Date_ 20030518
 Time 14.01
 INSTRUM av400
 PROBHD 5 mm QNP 1H/13
 PULPROG zgpg30
 TD 32768
 SOLVENT CDCl3
 NS 9
 DS 0
 SMH 4006.410 Hz
 FIDRES 0.122266 Hz
 AQ 4.0894966 sec
 RG 287.4
 DM 124.800 usec
 DE 6.00 usec
 TE 300.0 K
 D1 4.00000000 sec
 d11 0.03000000 sec
 d12 0.00002000 sec

***** CHANNEL f1 *****
 NUC1 1H
 P1 13.20 usec
 PL1 -4.00 dB
 SFO1 400.1318006 MHz

***** CHANNEL f2 *****
 CPDPRG2 gprg
 NUC2 13C
 PCPD2 80.00 usec
 PL2 -4.00 dB
 PL12 12.70 dB
 SFO2 376.4689871 MHz

F2 - Processing parameters
 SI 16384
 SF 400.1300101 MHz
 MDW EH
 SSB 0
 LB 0.00 Hz
 GB 0
 PC 1.00

1D NMR plot parameters
 CX 20.00 cm
 CY 11.28 cm
 F1P 10.000 ppm
 F1 4001.30 Hz
 F2P -1.000 ppm
 F2 -400.13 Hz
 DPMCH 0.55000 ppm/
 HZCH 200.07150 Hz/c



```

Current Data Parameters
NAME br-br-c-1
EXPNO 68
PROCNO 2

F2 - Acquisition Parameters
Date_ 2003020
Time 14.06
INSTRUM si-400
PROBHD 5 mm QNP 1H/13
PULPROG zgpg30
TD 32768
SOLVENT CDCl3
NS 204
DS 0
SWH 25125.629 Hz
FIDRES 0.766773 Hz
AQ 0.652133 sec
RG 912.3
CW 19.900 usec
DE 6.00 usec
TE 300.0 K
D1 2.5000000 sec
d11 0.6700000 sec

***** CHANNEL f1 *****
NUC1 13C
P1 9.10 usec
PL1 -5.00 dB
SFO1 100.628364 MHz

***** CHANNEL f2 *****
DRPGM2 waltz16
NUC2 1H
PULPROG zgpg30
PL2 -4.00 dB
PL12 12.00 dB
SFO2 400.1300007 MHz

F2 - Processed parameters
SI 32768
SF 100.612789 MHz
WDW EM
SSB 0
LB 1.00 Hz
GB 0
PC 1.40

ID MW list parameters
CX 25.00 cm
CY 11.67 cm
FIDP 200.000 um
F1 22134.81 Hz
F2 0.000 um
F3 0.00 Hz
PPHM 8.80000 ppm/cm
HCCA 885.39240 Hz/cm

```

